

# Human IL-10RB, C-His Tag Protein

HA211205



|  |   |
|--|---|
| <b>Product name:</b>                     | Human IL-10RB, C-His Tag  |
| <b>Species reactivity:</b>               | Human   |
| <b>Bio-Activity:</b>                     | Testing in progress.  |
| <b>Protein construction description:</b> | A DNA sequence encoding the human IL-10RB (Q08334) (Met 20-Ser 220) was expressed with a His tag at the C-terminus. |

**Background:** Interleukin 10 receptor, beta subunit is a subunit for the interleukin-10 receptor. IL10RB is its human gene. IL10RB has also recently been designated CDW210B (cluster of differentiation W210B). The protein encoded by this gene belongs to the cytokine receptor family. It is an accessory chain essential for the active interleukin 10 receptor complex. Coexpression of this and IL10RA proteins has been shown to be required for IL10-induced signal transduction. This gene and three other interferon receptor genes, IFNAR2, IFNAR1, and IFNGR2, form a class II cytokine receptor gene cluster located in a small region on chromosome 21.

**Purity:** >95% as determined by SDS-PAGE.

**Endotoxin:** Less than 1.0 EU per µg by the LAL method.

**Fragment region:** IL-10RB (20-220)

**Source:** HEK293

**Accession:** Q08334

**Predicted molecular mass:** 25.3 kD

**Formulation:** Lyophilized from a 0.2 µm filtered solution of PBS, pH7.4, 5% Trehalose, 5% mannitol.

**Reconstitution:** Reconstitute at 250 µg/ml in sterile water.

**Storage:** Please avoid repeated freeze-thaw cycles. Samples are stable for up to twelve months from date of receipt at -20°C to -80°C. It is recommended that aliquot the reconstituted solution to minimize freeze-thaw cycles.

Hangzhou Huaan Biotechnology Co., Ltd.

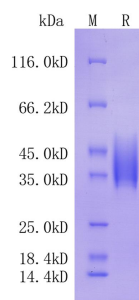
Orders: 0086-571-88062880

Technical: 0086-571-89986345

Service mail: support@huabio.cn

 华安生物  
HUABIO  
www.huabio.cn

Applications: WB=Western blot IHC-P=Immunohistochemistry (paraffin) IF-Cell=Immunofluorescence (Cell) IF-Tissue=Immunofluorescence (Tissue) FC=Flow cytometry IP=Immunoprecipitation



**Fig1:** Protein on SDS-PAGE under reducing (R) condition.

**Note:** All products are “FOR RESEARCH USE ONLY AND ARE NOT INTENDED FOR DIAGNOSTIC OR THERAPEUTIC USE”.