

# Human CA125/MUC16, C-His Tag Protein

HA211195



<b>Product name:</b>	Human CA125/MUC16, C-His Tag
<b>Species reactivity:</b>	Human
<b>Bio-Activity:</b>	Testing in progress.
<b>Protein construction description:</b>	A DNA sequence encoding the human CA125/MUC16 (Q8VXI7) (Met 13360-Gln 14347) was expressed with a His tag at the C-terminus.

**Background:** MUC16, also known as the CA125 antigen, is a mucin protein that may be found in type I transmembrane or secreted forms that are used monitor the progress of epithelial ovarian cancer therapy. Thought to provide a protective, lubricating barrier against particles and infectious agents at mucosal surfaces. Binding to MSLN mediates heterotypic cell adhesion. This may contribute to the metastasis of ovarian cancer to the peritoneum by initiating cell attachment to the mesothelial epithelium via binding to MSLN.

**Purity:** >95% as determined by SDS-PAGE.

**Endotoxin:** Less than 1.0 EU per µg by the LAL method.

**Fragment region:** CA125/MUC16 (13360-14347)

**Source:** HEK293

**Accession:** Q8VXI7

**Predicted molecular mass:** 111.5 kD

**Formulation:** Lyophilized from a 0.2 µm filtered solution of PBS, pH7.4, 5% Trehalose, 5% mannitol.

**Reconstitution:** Reconstitute at 250 µg/ml in sterile water.

**Storage:** Please avoid repeated freeze-thaw cycles. Samples are stable for up to twelve months from date of receipt at -20°C to -80°C. It is recommended that aliquot the reconstituted solution to minimize freeze-thaw cycles.

Hangzhou Huaan Biotechnology Co., Ltd.

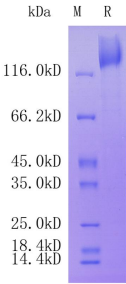
Orders: 0086-571-88062880

Technical: 0086-571-89986345

Service mail: support@huabio.cn

 华安生物  
HUABIO  
www.huabio.cn

Applications: WB=Western blot IHC-P=Immunohistochemistry (paraffin) IF-Cell=Immunofluorescence (Cell) IF-Tissue=Immunofluorescence (Tissue) FC=Flow cytometry IP=Immunoprecipitation



**Fig1:** Protein on SDS-PAGE under reducing (R) condition.

**Note:** All products are “FOR RESEARCH USE ONLY AND ARE NOT INTENDED FOR DIAGNOSTIC OR THERAPEUTIC USE”.