

# Human Thioredoxin/TXN, C-His Tag Protein

HA211189



<b>Product name:</b>	Human Thioredoxin/TXN, C-His Tag
<b>Species reactivity:</b>	Human
<b>Bio-Activity:</b>	Testing in progress.
<b>Protein construction description:</b>	A DNA sequence encoding the human Thioredoxin/TXN protein (P10599-1) (Val 2-Val 105) was expressed with a His tag at the C-terminus.

**Background:** Thioredoxin (Trx) is a redox protein that is found in several species, such as bacteria, plants and mammals, and contains a conserved active site, consisting of Trp-Cys-Gly-Pro-Cys. Trx has several biological functions. It acts as a hydrogen donor for ribonucleotide reductase, which is critical for DNA synthesis, and modulates the DNA-binding activity of several transcription factors, including NFkB, AP-1, p53, TFIIC and glucocorticoid receptor. Trx also stimulates cell growth, is an inhibitor of apoptosis and plays a role in the protection against oxidative stress. Drugs that inhibit Trx have antitumor activity, suggesting that Trx is involved in a variety of human diseases, including cancer. TrxR is a ubiquitously expressed flavoprotein that catalyzes the NADPH-dependent reduction of Trx as well as several other oxidized cellular components.

**Purity:** >95% as determined by SDS-PAGE.

**Endotoxin:** Less than 1.0 EU per µg by the LAL method.

**Fragment region:** Thioredoxin/TXN (2-105)

**Source:** HEK293

**Accession:** P10599-1

**Predicted molecular mass:** 13.4 kD

**Formulation:** Lyophilized from a 0.2 µm filtered solution of PBS, pH7.4, 5% Trehalose, 5% mannitol.

**Reconstitution:** Reconstitute at 250 µg/ml in sterile water.

**Storage:** Please avoid repeated freeze-thaw cycles. Samples are stable for up to twelve months from date of receipt at -20°C to -80°C. It is recommended that aliquot the reconstituted solution to minimize freeze-thaw cycles.

Hangzhou Huaan Biotechnology Co., Ltd.

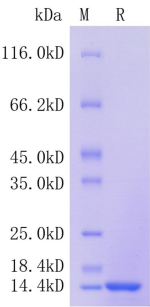
Orders: 0086-571-88062880

Technical: 0086-571-89986345

Service mail: support@huabio.cn

 华安生物  
HUABIO  
www.huabio.cn

Applications: WB=Western blot IHC-P=Immunohistochemistry (paraffin) IF-Cell=Immunofluorescence (Cell) IF-Tissue=Immunofluorescence (Tissue) FC=Flow cytometry IP=Immunoprecipitation



**Fig1:** Protein on SDS-PAGE under reducing (R) condition.

**Note:** All products are “FOR RESEARCH USE ONLY AND ARE NOT INTENDED FOR DIAGNOSTIC OR THERAPEUTIC USE”.