

Human Lumican, C-His Tag Protein

HA211171



Product name:	Human Lumican, C-His Tag
Species reactivity:	Human
Bio-Activity:	Testing in progress.
Protein construction description:	A DNA sequence encoding the human Lumican protein (P51884) (Gln 19-Asn338) was expressed with a His tag at the C-terminus.

Background: Lumican, a member of the small leucine-rich proteoglycans (SLRPs) family of proteins, is a keratan sulfate proteoglycan present in large quantities in the corneal stroma and in interstitial collagenous matrices of the heart, aorta, skeletal muscle, skin, and intervertebral discs. During collagen fibrillogenesis, lumican regulates the assembly of collagens into higher order fibrils, limiting the growth of fibrils in diameter. Lumican is present in the extracellular matrix of human articular cartilage at all ages, with a far greater abundance in the adult. The gene encoding human lumican maps to chromosome 12q21.3-q22.

Purity: >95% as determined by SDS-PAGE.

Fragment region: Lumican (19-338)

Source: HEK293

Accession: P51884

Predicted molecular mass: 38 kD

Formulation: Lyophilized from a 0.2 µm filtered solution of PBS, pH7.4, 5% Trehalose, 5% mannitol.

Reconstitution: Reconstitute at 250 µg/ml in sterile water.

Storage: Please avoid repeated freeze-thaw cycles. Samples are stable for up to twelve months from date of receipt at -20°C to -80°C. It is recommended that aliquot the reconstituted solution to minimize freeze-thaw cycles.

Hangzhou Huaan Biotechnology Co., Ltd.

Orders: 0086-571-88062880

Technical: 0086-571-89986345

Service mail: support@huabio.cn

 华安生物
HUABIO
www.huabio.cn

Applications: WB=Western blot IHC-P=Immunohistochemistry (paraffin) IF-Cell=Immunofluorescence (Cell) IF-Tissue=Immunofluorescence (Tissue) FC=Flow cytometry IP=Immunoprecipitation

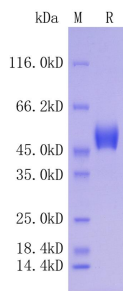


Fig1: Protein on SDS-PAGE under reducing (R) condition.

Note: All products are “FOR RESEARCH USE ONLY AND ARE NOT INTENDED FOR DIAGNOSTIC OR THERAPEUTIC USE”.