

Human I-309/CCL1, Tag Free Protein

HA211081



Product name:	Human I-309/CCL1, Tag Free
Species reactivity:	Human
Bio-Activity:	Testing in progress.
Protein construction description:	A DNA sequence encoding the human I-309/CCL1 protein (P22362) (Lys 24-Lys 96) was expressed with tag free.

Background:	Chemokine (C-C motif) ligand 1 (CCL1) is also known as small inducible cytokine A1 and I-309 in humans. CCL1 is a small glycoprotein that belongs to the CC chemokine family. CCL1 is a small glycoprotein with a molecular weight of approximately 15-16 kDa. CCL1 is secreted by activated monocytes/macrophages, T lymphocytes and endothelial cells. CCL1 binds to the chemokine receptor CCR8 and induces Ca ²⁺ influx, chemotaxis and regulate apoptosis. CCR8 is constitutively expressed in monocytes/macrophages, Th2, and regulatory T lymphocytes. Thus, CCL1 mainly acts as a chemoattractant for monocytes/macrophages, T lymphocytes, specially Th2-differentiated T cells and a subset of T regulatory cells in vitro into inflammatory site. It can also attract NK cells, immature B cells but does not attract neutrophils. CCL1 stimulates a transient increase in the concentration of cytoplasmic free calcium in monocytes but not in other type of cells. Furthermore, CCL1 inhibits apoptosis in thymic cell lines by the RAS/MAPK pathway but can prevent dexamethasone-induced apoptosis in cultured murine thymic lymphoma cells.
--------------------	---

Purity:	>90% as determined by SDS-PAGE.
Endotoxin:	Less than 1.0 EU per µg by the LAL method.
Fragment region:	I-309/CCL1 (24-96)
Source:	HEK293
Accession:	P22362
Predicted molecular mass:	8.8 kD
Formulation:	Lyophilized from a 0.2 µm filtered solution of PBS, pH7.4, 5% Trehalose, 5% mannitol.
Reconstitution:	Reconstitute at 250 µg/ml in sterile water.
Storage:	Please avoid repeated freeze-thaw cycles. Samples are stable for up to twelve months from date of receipt at -20°C to -80°C. It is recommended that aliquot the reconstituted solution to minimize freeze-thaw cycles.

Hangzhou Huaan Biotechnology Co., Ltd.

Orders: 0086-571-88062880

Technical: 0086-571-89986345

Service mail: support@huabio.cn

华安生物
HUABIO
www.huabio.cn

Applications: WB=Western blot IHC-P=Immunohistochemistry (paraffin) IF-Cell=Immunofluorescence (Cell) IF-Tissue=Immunofluorescence (Tissue) FC=Flow cytometry IP=Immunoprecipitation

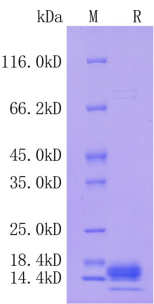


Fig1: Protein on SDS-PAGE under reducing (R) condition.

Note: All products are “FOR RESEARCH USE ONLY AND ARE NOT INTENDED FOR DIAGNOSTIC OR THERAPEUTIC USE”.