

Human IL-21, Tag Free Protein

HA211070



Product name:	Human IL-21, Tag Free
Species reactivity:	Human
Bio-Activity:	Testing in progress.
Protein construction description:	A DNA sequence encoding the human IL-21 protein (Q9HBE4-1) (Gln 32-Ser 162) was expressed with tag free.

Background:	IL-21 (Interleukin-21) is member of the family of cytokines that utilize the common gamma chain as a receptor subunit. This subunit is also a component of the receptors for IL-2, IL-4, IL-7, IL-9, and IL-15. IL-21 is produced by activated T follicular helper cells (T _{fh}), Th17 cells, and NKT cells. It exerts its biological effects through a heterodimeric receptor complex of the common gamma chain and the IL-21-specific IL-21 R. IL-21 supports T _{fh} cell development, immunoglobulin affinity maturation, plasma cell differentiation, B cell memory responses, and the migration of dendritic cells to draining lymph nodes. It costimulates the activation, proliferation, and survival of CD8 ⁺ T cells and NKT cells and promotes Th17 cell polarization. It blocks the generation of regulatory T cells and their suppressive effects on CD4 ⁺ T cells. In addition, IL-21 suppresses cutaneous hypersensitivity reactions by limiting allergen-specific IgE production and mast cell degranulation.
--------------------	--

Purity: >95% as determined by SDS-PAGE.

Endotoxin: Less than 1.0 EU per µg by the LAL method.

Fragment region: IL-21 (32-162)

Source: HEK293

Accession: Q9HBE4-1

Predicted molecular mass: 15.6 kD

Formulation: Lyophilized from a 0.2 µm filtered solution of PBS, pH7.4, 5% Trehalose, 5% mannitol.

Reconstitution: Reconstitute at 250 µg/ml in sterile water.

Storage: Please avoid repeated freeze-thaw cycles. Samples are stable for up to twelve months from date of receipt at -20°C to -80°C. It is recommended that aliquot the reconstituted solution to minimize freeze-thaw cycles.

Hangzhou Huaan Biotechnology Co., Ltd.

Orders: 0086-571-88062880

Technical: 0086-571-89986345

Service mail: support@huabio.cn

华安生物
HUABIO
www.huabio.cn

Applications: WB=Western blot IHC-P=Immunohistochemistry (paraffin) IF-Cell=Immunofluorescence (Cell) IF-Tissue=Immunofluorescence (Tissue) FC=Flow cytometry IP=Immunoprecipitation

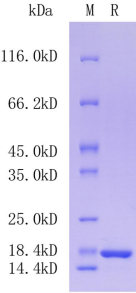


Fig1: Protein on SDS-PAGE under reducing (R) condition.

Note: All products are “FOR RESEARCH USE ONLY AND ARE NOT INTENDED FOR DIAGNOSTIC OR THERAPEUTIC USE”.