

Human TSLP, C-His Tag Protein

HA210952



Product name:	Human TSLP, C-His Tag
Species reactivity:	Human
Bio-Activity:	Testing in progress.
Protein construction description:	A DNA sequence encoding the human TSLP protein (Q969D9) (Tyr 29-Gln 159) was expressed with a His tag at the C-terminus.

Background:	This gene encodes a hemopoietic cytokine proposed to signal through a heterodimeric receptor complex composed of the thymic stromal lymphopoietin receptor and the IL-7R alpha chain. It mainly impacts myeloid cells and induces the release of T cell-attracting chemokines from monocytes and enhances the maturation of CD11c(+) dendritic cells. The protein promotes T helper type 2 (TH2) cell responses that are associated with immunity in various inflammatory diseases, including asthma, allergic inflammation and chronic obstructive pulmonary disease. The protein is therefore considered a potential therapeutic target for the treatment of such diseases. In addition, the shorter (predominant) isoform is an antimicrobial protein, displaying antibacterial and antifungal activity against <i>B. cereus</i> , <i>E. coli</i> , <i>E. faecalis</i> , <i>S. mitis</i> , <i>S. epidermidis</i> , and <i>C. albicans</i> . Alternative splicing of this gene results in multiple transcript variants.
--------------------	---

Purity:	>95% as determined by SDS-PAGE.
Endotoxin:	Less than 1.0 EU per µg by the LAL method.
Fragment region:	TSLP (29-159)
Source:	HEK293
Accession:	Q969D9
Predicted molecular mass:	16.3 kD
Formulation:	Lyophilized from a 0.2 µm filtered solution of PBS, pH7.4, 5% Trehalose, 5% mannitol.
Reconstitution:	Reconstitute at 250 µg/ml in sterile water.
Storage:	Please avoid repeated freeze-thaw cycles. Samples are stable for up to twelve months from date of receipt at -20°C to -80°C. It is recommended that aliquot the reconstituted solution to minimize freeze-thaw cycles.

Hangzhou Huaan Biotechnology Co., Ltd.

Orders: 0086-571-88062880

Technical: 0086-571-89986345

Service mail: support@huabio.cn

华安生物
HUABIO
www.huabio.cn

Applications: WB=Western blot IHC-P=Immunohistochemistry (paraffin) IF-Cell=Immunofluorescence (Cell) IF-Tissue=Immunofluorescence (Tissue) FC=Flow cytometry IP=Immunoprecipitation

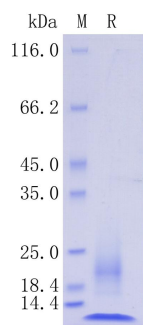


Fig1: Protein on SDS-PAGE under reducing (R) condition.

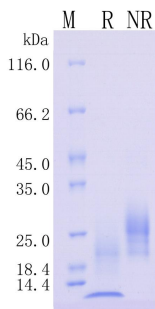


Fig2: Protein on SDS-PAGE under reducing (R) and non-reducing (NR) condition.

Note: All products are “FOR RESEARCH USE ONLY AND ARE NOT INTENDED FOR DIAGNOSTIC OR THERAPEUTIC USE”.