

Human MICB, C-His Tag Protein

HA210907



Product name:	Human MICB, C-His Tag
Species reactivity:	Human
Bio-Activity:	Testing in progress.
Protein construction description:	A DNA sequence encoding the human MICB protein (Q29980-1) (Ala 23-Asp 309) was expressed with a His tag at the C-terminus

Background: MHC class I polypeptide-related sequence B (MICB) is a protein that is encoded by the MICB gene located within MHC locus. MICB is related to MHC class I and has similar domain structure, which is made up of external $\alpha 1\alpha 2\alpha 3$ domain, transmembrane segment and C-terminal cytoplasmic tail. MICB is a stress-induced ligand for NKG2D receptor. The heat shock stress pathway is involved in the regulation of MICB expression as transcription of MICB is regulated by promoter heat shock element.

Purity: >95% as determined by SDS-PAGE.

Endotoxin: Less than 1.0 EU per μg by the LAL method.

Fragment region: MICB (23-309)

Source: HEK293

Accession: Q29980-1

Predicted molecular mass: 34.1 kD

Formulation: Lyophilized from a 0.2 μm filtered solution of PBS, pH7.4, 5% Trehalose, 5% mannitol.

Reconstitution: Reconstitute at 250 $\mu\text{g}/\text{ml}$ in sterile water.

Storage: Please avoid repeated freeze-thaw cycles. Samples are stable for up to twelve months from date of receipt at -20°C to -80°C . It is recommended that aliquot the reconstituted solution to minimize freeze-thaw cycles.

Hangzhou Huaan Biotechnology Co., Ltd.

Orders:0086-571-88062880

Technical:0086-571-89986345

Service mail:support@huabio.cn

 华安生物
HUABIO
www.huabio.cn

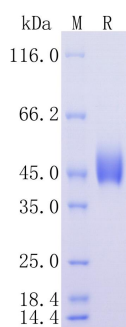


Fig1: Protein on SDS-PAGE under reducing (R) condition.

Note: All products are "FOR RESEARCH USE ONLY AND ARE NOT INTENDED FOR DIAGNOSTIC OR THERAPEUTIC USE".
