

Human NKX2-2, N-Twin Strep, C-His, Flag Tag Protein

HA210755



Product name:	Human NKX2-2, N-Twin Strep, C-His, Flag Tag
Species reactivity:	Human
Protein construction description:	A DNA sequence encoding the human NKX2-2 protein (O95096) (Asp 20-Lys 128) was expressed with a Twin strep tag at the N-terminus and both His, Flag tag at the C-terminus.
Background:	The protein encoded by this gene contains a homeobox domain and may be involved in the morphogenesis of the central nervous system. This gene is found on chromosome 20 near NKX2-4, and these two genes appear to be duplicated on chromosome 14 in the form of TITF1 and NKX2-8. The encoded protein is likely to be a nuclear transcription factor. Transcriptional activator involved in the development of insulin-producing beta cells in the endocrine pancreas. May also be involved in specifying diencephalic neuromeric boundaries, and in controlling the expression of genes that play a role in axonal guidance. Binds to elements within the NEUROD1 promoter.
Purity:	>90% as determined by SDS-PAGE.
Endotoxin:	Less than 1.0 EU per µg by the LAL method.
Fragment region:	NKX2-2 (20-128)
Source:	E.coli
Accession:	O95096
Predicted molecular mass:	17.9 kD
Formulation:	Lyophilized from a 0.2 µm filtered solution of PBS, pH7.4, 5% Trehalose, 5% mannitol.
Reconstitution:	Reconstitute at 250 µg/ml in sterile water
Storage:	Please avoid repeated freeze-thaw cycles. Samples are stable for up to twelve months from date of receipt at -20°C to -80°C. It is recommended that aliquot the reconstituted solution to minimize freeze-thaw cycles.

Hangzhou Huaan Biotechnology Co., Ltd.

Orders: 0086-571-88062880

Technical: 0086-571-89986345

Service mail: support@huabio.cn

 华安生物
HUABIO
www.huabio.cn

Applications: WB=Western blot IHC-P=Immunohistochemistry (paraffin) IF-Cell=Immunofluorescence (Cell) IF-Tissue=Immunofluorescence (Tissue) FC=Flow cytometry IP=Immunoprecipitation

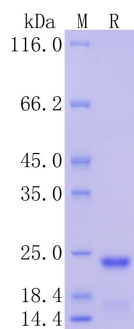


Fig1: Protein on SDS-PAGE under reducing (R) condition.

Note: All products are “FOR RESEARCH USE ONLY AND ARE NOT INTENDED FOR DIAGNOSTIC OR THERAPEUTIC USE”.