

## Escherichia phage P1 Recombinase cre, C-His Tag Protein

HA210699



<b>Product name:</b>	Escherichia phage P1 Recombinase cre, C-His Tag
<b>Species reactivity:</b>	Escherichia phage P1
<b>Bio-Activity:</b>	Testing in progress.
<b>Protein construction description:</b>	A DNA sequence encoding the human Recombinase cre protein (P06956) (Met 1-Asp 343) was expressed with a His tag at the C-terminus.
<b>Background:</b>	Catalyzes site-specific recombination between two 34-base-pair LOXP sites. Its role is to maintain the phage genome as a monomeric unit-copy plasmid in the lysogenic state.
<b>Purity:</b>	>95% as determined by SDS-PAGE.
<b>Endotoxin:</b>	Less than 1.0 EU per µg by the LAL method.
<b>Fragment region:</b>	Recombinase cre (1-343)
<b>Source:</b>	E.coli
<b>Accession:</b>	P06956
<b>Predicted molecular mass:</b>	40.2 kD
<b>Formulation:</b>	Lyophilized from a 0.2 µm filtered solution of PBS, pH7.4, 5% Trehalose, 5% mannitol.
<b>Reconstitution:</b>	Reconstitute at 250 µg/ml in sterile water.
<b>Storage:</b>	Please avoid repeated freeze-thaw cycles. Samples are stable for up to twelve months from date of receipt at -20°C to -80°C. It is recommended that aliquot the reconstituted solution to minimize freeze-thaw cycles.

Hangzhou Huaan Biotechnology Co., Ltd.

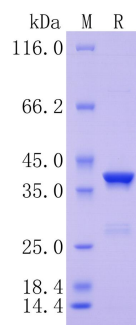
Orders:0086-571-88062880

Technical:0086-571-89986345

Service mail:support@huabio.cn

 华安生物  
HUABIO  
www.huabio.cn

Applications:WB=Western blot IHC-P=Immunohistochemistry (paraffin) IF-Cell=Immunofluorescence (Cell) IF-Tissue=Immunofluorescence (Tissue) FC=Flow cytometry IP=Immunoprecipitation



**Fig1:** Protein on SDS-PAGE under reducing (R) condition.

**Note:** All products are “FOR RESEARCH USE ONLY AND ARE NOT INTENDED FOR DIAGNOSTIC OR THERAPEUTIC USE”.