

Human CD38 Protein

HA210246



Product name:	Human CD38 Protein
Species reactivity:	Human
Protein construction description:	Recombinant Human CD38 Protein is expressed from HEK293 with His tag at the C-Terminus. It contains Val43-Ile300.

Background: CD38 (cluster of differentiation 38), also known as cyclic ADP ribose hydrolase, is a transmembrane glycoprotein found on the surface of some immune cells including plasma cells, activated or immature T and B cells, monocytes, and natural killer cells. CD38 participates in cell adhesion, signal transduction and calcium signaling.

Purity: > 95% as determined by Tris-Bis PAGE > 95% as determined by HPLC

Endotoxin: Less than 1EU per µg by the LAL method.

Source: HEK293

Accession: P28907-1

Predicted molecular mass: The protein has a predicted MW of 30.7 kDa. Due to glycosylation, the protein migrates to 45-58 kDa based on Tris-Bis PAGE result

Formulation: Lyophilized from 0.22µm filtered solution in PBS (pH 7.4). Normally 8% trehalose is added as protectant before lyophilization.

Reconstitution: Centrifuge the tube before opening. Reconstituting to a concentration more than 100 µg/ml is recommended. Dissolve the lyophilized protein in distilled water.

Storage:
-20 to -80°C for 12 months as supplied from date of receipt.
-80°C for 3-6 months after reconstitution.
2-8°C for 2-7 days after reconstitution.
Recommend to aliquot the protein into smaller quantities for optimal storage. Please minimize freeze-thaw cycles.

Hangzhou Huaan Biotechnology Co., Ltd.

Orders:0086-571-88062880

Technical:0086-571-89986345

Service mail:support@huabio.cn

华安生物
HUABIO
www.huabio.cn

Applications:WB=Western blot IHC-P=Immunohistochemistry (paraffin) IF-Cell=Immunofluorescence (Cell) IF-Tissue=Immunofluorescence (Tissue) FC=Flow cytometry IP=Immunoprecipitation

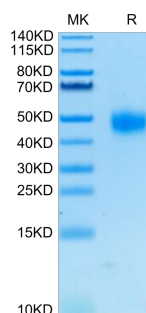


Fig1: Human CD38 on Tris-Bis PAGE under reduced condition. The purity is greater than 95%.

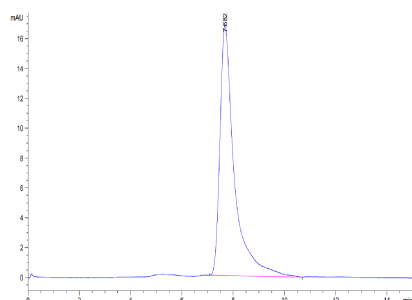


Fig2: The purity of Human CD38 is greater than 95% as determined by SEC-HPLC.

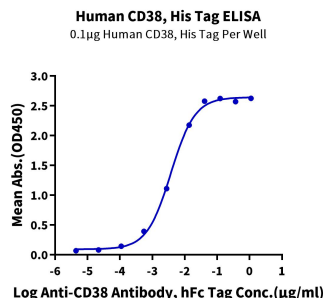


Fig3: Immobilized Human CD38, His Tag at 1μg/ml (100μl/Well) on the plate. Dose response curve for Anti-CD38 Antibody, hFc Tag with the EC₅₀ of 3.7ng/ml determined by ELISA (QC Test).

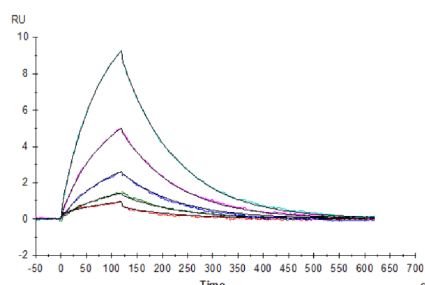


Fig4: Anti-CD38 Antibody captured on Protein A chip, can bind Human CD38, His Tag with an affinity constant of 0.23μM as determined in a SPR assay (Biacore T200).

Hangzhou Huaan Biotechnology Co., Ltd.

Orders:0086-571-88062880

Technical:0086-571-89986345

Service mail:support@huabio.cn

华安生物
HUABIO
www.huabio.cn

Applications:WB=Western blot IHC-P=Immunohistochemistry (paraffin) IF-Cell=Immunofluorescence (Cell) IF-Tissue=Immunofluorescence (Tissue) FC=Flow cytometry IP=Immunoprecipitation

Note: All products are “FOR RESEARCH USE ONLY AND ARE NOT INTENDED FOR DIAGNOSTIC OR THERAPEUTIC USE”.

Hangzhou Huaan Biotechnology Co., Ltd.

Orders: 0086-571-88062880

Technical: 0086-571-89986345

Service mail: support@huabio.cn

 华安生物
HUAABIO
www.huabio.cn

Applications: WB=Western blot IHC-P=Immunohistochemistry (paraffin) IF-Cell=Immunofluorescence (Cell) IF-Tissue=Immunofluorescence (Tissue) FC=Flow cytometry IP=Immunoprecipitation