

Human DLL3 Protein

HA210242



Product name:	Human DLL3 Protein
Species reactivity:	Human
Protein construction description:	Recombinant Human DLL3 is expressed from HEK293 with His tag at the N-Terminus.; It contains Ala27-Arg490.
Background:	Delta-like protein 3 (DLL3) is a transmembrane protein that belongs to the Delta/Serrate/Lag-2 (DSL) family of Notch ligands. DLL3 inhibits primary neurogenesis. May be required to divert neurons along a specific differentiation pathway. Plays a role in the formation of somite boundaries during segmentation of the paraxial mesoderm (By similarity).
Purity:	> 95% as determined by Tris-Bis PAGE
Endotoxin:	Less than 1 EU per µg by the LAL method.
Source:	HEK293
Accession:	Q9NYJ7-1
Predicted molecular mass:	The protein has a predicted MW of 50.4 kDa. Due to glycosylation, the protein migrates to 52-60 kDa based on Tris-Bis PAGE result.
Formulation:	Lyophilized from 0.22 µm filtered solution in PBS, 200 mM Arginine (pH 7.4). Normally 8% trehalose is added as protectant before lyophilization.
Reconstitution:	Centrifuge the tube before opening. Reconstituting to a concentration more than 100 µg/ml is recommended. Dissolve the lyophilized protein in distilled water.
Storage:	-20 to -80°C for 12 months as supplied from date of receipt.; -80°C for 3-6 months after reconstitution.; 2-8°C for 2-7 days after reconstitution.; Recommend to aliquot the protein into smaller quantities for optimal storage. Please minimize freeze-thaw cycles.

Hangzhou Huaan Biotechnology Co., Ltd.

Orders:0086-571-88062880

Technical:0086-571-89986345

Service mail:support@huabio.cn

 华安生物
HUABIO
www.huabio.cn

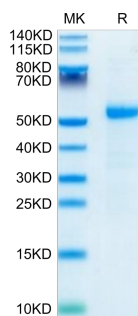


Fig1: Human DLL3 on Tris-Bis PAGE under reduced condition. The purity is greater than 95%.

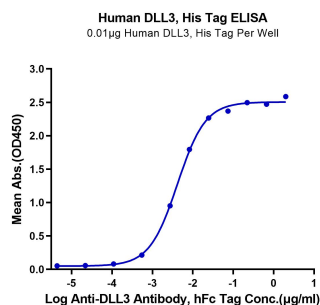


Fig2: Immobilized Human DLL3, His Tag at 0.1 µg/mL (100 µl/well). Dose response curve for Anti-DLL3 Antibody, hFc Tag with the EC50 of 4.5 ng/ml determined by ELISA (QC Test).

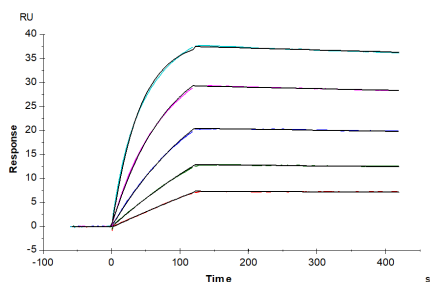


Fig3: Anti-DLL3 Antibody captured on CM5 Chip via Protein A can bind Human DLL3, His Tag with an affinity constant of 0.22 nM as determined in SPR assay (Biacore T200).

Note: All products are “FOR RESEARCH USE ONLY AND ARE NOT INTENDED FOR DIAGNOSTIC OR THERAPEUTIC USE”.