

Human CTLA-4/CD152 Protein

HA210241



Product name:	Human CTLA-4/CD152 Protein
Species reactivity:	Human
Protein construction description:	Recombinant Human CTLA-4/CD152 Protein is expressed from HEK293 with His tag at the C-Terminus. It contains Lys36-Asp161.
Background:	CTLA-4 (cytotoxic T-lymphocyte-associated protein 4), also known as CD152, is a protein receptor that, functioning as an immune checkpoint, downregulates immune responses. CTLA4 is constitutively expressed in regulatory T cells but only upregulated in conventional T cells after activation – a phenomenon which is particularly notable in cancers. It acts as an "off" switch when bound to CD80 or CD86 on the surface of antigen-presenting cells.
Purity:	> 95% as determined by Tris-Bis PAGE > 95% as determined by HPLC
Endotoxin:	Less than 1EU per µg by the LAL method.
Source:	HEK293
Accession:	P16410-1
Predicted molecular mass:	The protein has a predicted MW of 14.3 kDa. Due to glycosylation, the protein migrates to 28-35 kDa based on Tris-Bis PAGE result.
Formulation:	Lyophilized from 0.22µm filtered solution in PBS (pH 7.4). Normally 8% trehalose is added as protectant before lyophilization.
Reconstitution:	Centrifuge the tube before opening. Reconstituting to a concentration more than 100 µg/ml is recommended. Dissolve the lyophilized protein in distilled water.
Storage:	-20 to -80°C for 12 months as supplied from date of receipt. -80°C for 3-6 months after reconstitution. 2-8°C for 2-7 days after reconstitution. Recommend to aliquot the protein into smaller quantities for optimal storage. Please minimize freeze-thaw cycles.

Hangzhou Huaan Biotechnology Co., Ltd.

Orders: 0086-571-88062880

Technical: 0086-571-89986345

Service mail: support@huabio.cn

 华安生物
HUABIO
www.huabio.cn

Applications: WB=Western blot IHC-P=Immunohistochemistry (paraffin) IF-Cell=Immunofluorescence (Cell) IF-Tissue=Immunofluorescence (Tissue) FC=Flow cytometry IP=Immunoprecipitation

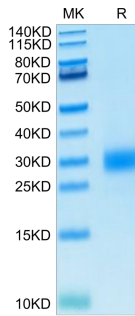


Fig1: Human CTLA-4 on Tris-Bis PAGE under reduced condition. The purity is greater than 95%.

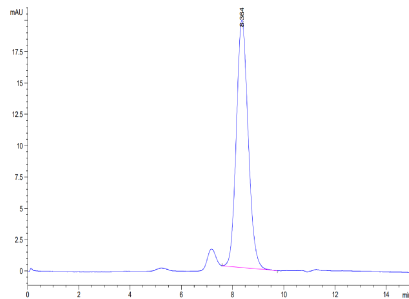


Fig2: The purity of Human CTLA-4 is greater than 95% as determined by SEC-HPLC.

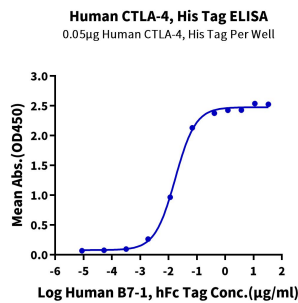


Fig3: Immobilized Human CTLA-4, His Tag at 0.5μg/ml (100μl/well) on the plate. Dose response curve for Human B7-1, hFc Tag with the EC50 of 17.2ng/ml determined by ELISA (QC Test).

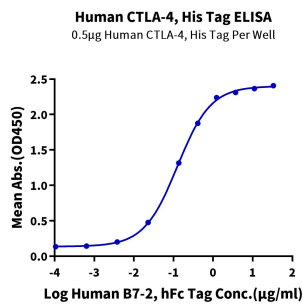


Fig4: Immobilized Human CTLA-4, His Tag at 5μg/ml (100μl/well) on the plate. Dose response curve for Human B7-2, hFc Tag with the EC50 of 125.7ng/ml determined by ELISA.

Hangzhou Huaan Biotechnology Co., Ltd.

Orders:0086-571-88062880

Technical:0086-571-89986345

Service mail:support@huabio.cn

华安生物
HUABIO
www.huabio.cn

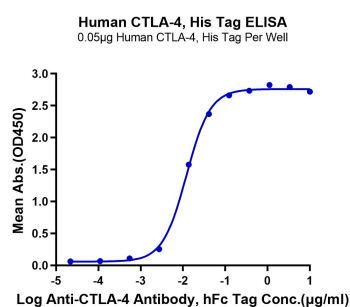


Fig5: Immobilized Human CTLA-4, His Tag at 0.5 μ g/ml (100 μ l/Well) on the plate. Dose response curve for Anti-CTLA-4 Antibody, hFc Tag with the EC50 of 12.1ng/ml determined by ELISA.

Note: All products are “FOR RESEARCH USE ONLY AND ARE NOT INTENDED FOR DIAGNOSTIC OR THERAPEUTIC USE”.

Hangzhou Huaan Biotechnology Co., Ltd.

Orders:0086-571-88062880

Technical:0086-571-89986345

Service mail:support@huabio.cn

华安生物
HUABIO
www.huabio.cn

Applications:WB=Western blot IHC-P=Immunohistochemistry (paraffin) IF-Cell=Immunofluorescence (Cell) IF-Tissue=Immunofluorescence (Tissue) FC=Flow cytometry IP=Immunoprecipitation