

# Human LAG3/CD223 Protein

HA210226



<b>Product name:</b>	Human LAG3/CD223 Protein
<b>Species reactivity:</b>	Human
<b>Protein construction description:</b>	Recombinant Human LAG3/CD223 Protein is expressed from HEK293 with His tag at the C-Terminus. It contains Leu23-Gly434.
<b>Background:</b>	LAG-3, is a protein which in humans is encoded by the LAG3 gene, which is a cell surface molecule with diverse biologic effects on T cell function. It is an immune checkpoint receptor and as such is the target of various drug development programs by pharmaceutical companies seeking to develop new treatments for cancer and autoimmune disorders.
<b>Purity:</b>	> 95% as determined by Tris-Bis PAGE > 95% as determined by HPLC
<b>Endotoxin:</b>	Less than 1EU per µg by the LAL method.
<b>Source:</b>	HEK293
<b>Accession:</b>	P18627-1
<b>Predicted molecular mass:</b>	The protein has a predicted MW of 45.5 kDa. Due to glycosylation, the protein migrates to 55-65 kDa based on Tris-Bis PAGE result.
<b>Formulation:</b>	Lyophilized from 0.22µm filtered solution in PBS (pH 7.4). Normally 8% trehalose is added as protectant before lyophilization.
<b>Reconstitution:</b>	Centrifuge the tube before opening. Reconstituting to a concentration more than 100 µg/ml is recommended. Dissolve the lyophilized protein in distilled water.
<b>Storage:</b>	-20 to -80°C for 12 months as supplied from date of receipt. -80°C for 3-6 months after reconstitution. 2-8°C for 2-7 days after reconstitution. Recommend to aliquot the protein into smaller quantities for optimal storage. Please minimize freeze-thaw cycles.

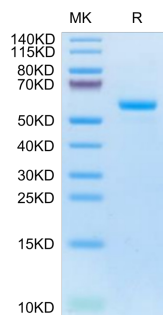
Hangzhou Huaan Biotechnology Co., Ltd.

Orders:0086-571-88062880

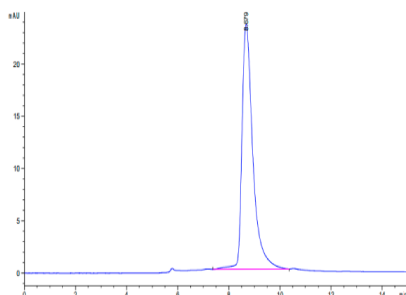
Technical:0086-571-89986345

Service mail:support@huabio.cn

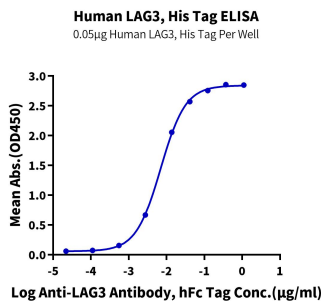
 华安生物  
HUABIO  
www.huabio.cn



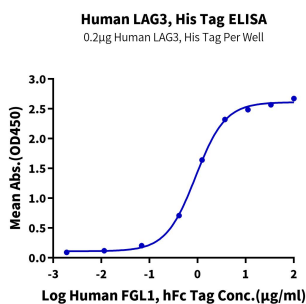
**Fig1:** Human LAG3 on Tris-Bis PAGE under reduced condition. The purity is greater than 95%.



**Fig2:** The purity of Human LAG3 is greater than 95% as determined by SEC-HPLC.



**Fig3:** Immobilized Human LAG3, His Tag at 0.5 $\mu$ g/ml (100 $\mu$ l/well) on the plate. Dose response curve for Anti-LAG3 Antibody, hFc Tag with the EC50 of 7.0ng/ml determined by ELISA (QC Test).



**Fig4:** Immobilized Human LAG3, His Tag at 2 $\mu$ g/ml (100 $\mu$ l/Well) on the plate. Dose response curve for Human FGL1, hFc Tag with the EC50 of 0.91 $\mu$ g/ml determined by ELISA.

---

**Note:** All products are “FOR RESEARCH USE ONLY AND ARE NOT INTENDED FOR DIAGNOSTIC OR THERAPEUTIC USE”.

---

**Hangzhou Huaan Biotechnology Co., Ltd.**

Orders:0086-571-88062880

Technical:0086-571-89986345

Service mail:support@huabio.cn



Applications:WB=Western blot IHC-P=Immunohistochemistry (paraffin) IF-Cell=Immunofluorescence (Cell) IF-Tissue=Immunofluorescence (Tissue) FC=Flow cytometry IP=Immunoprecipitation