

# Human CA125/MUC16 Protein

HA210124



<b>Product name:</b>	Human CA125/MUC16 Protein
<b>Species reactivity:</b>	Human
<b>Protein construction description:</b>	Recombinant Human CA125/MUC16 Protein is expressed from HEK293 with His tag and Avi tag at the C-Terminus. It contains Gly12660-Met12923.
<b>Background:</b>	MUC16, also known as the CA125 antigen, is a mucin protein that may be found in type I transmembrane or secreted forms that are used monitor the progress of epithelial ovarian cancer therapy. Thought to provide a protective, lubricating barrier against particles and infectious agents at mucosal surfaces. Binding to MSLN mediates heterotypic cell adhesion. This may contribute to the metastasis of ovarian cancer to the peritoneum by initiating cell attachment to the mesothelial epithelium via binding to MSLN.
<b>Purity:</b>	> 95% as determined by Tris-Bis PAGE
<b>Endotoxin:</b>	Less than 1EU per µg by the LAL method.
<b>Source:</b>	HEK293
<b>Accession:</b>	Q8WXI7
<b>Predicted molecular mass:</b>	The protein has a predicted MW of 31.3 kDa. Due to glycosylation, the protein migrates to 50-80 kDa based on Tris-Bis PAGE result.
<b>Formulation:</b>	Lyophilized from 0.22µm filtered solution in PBS (pH 7.4). Normally 8% trehalose is added as protectant before lyophilization.
<b>Reconstitution:</b>	Centrifuge the tube before opening. Reconstituting to a concentration more than 100 µg/ml is recommended. Dissolve the lyophilized protein in distilled water.
<b>Storage:</b>	-20 to -80°C for 12 months as supplied from date of receipt. -80°C for 3-6 months after reconstitution. 2-8°C for 2-7 days after reconstitution. Recommend to aliquot the protein into smaller quantities for optimal storage. Please minimize freeze-thaw cycles.

Hangzhou Huaan Biotechnology Co., Ltd.

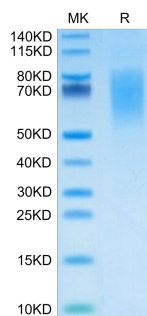
Orders: 0086-571-88062880

Technical: 0086-571-89986345

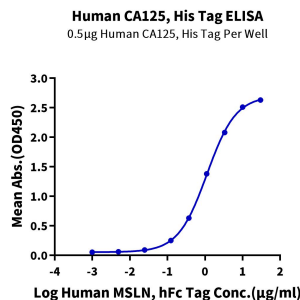
Service mail: support@huabio.cn

 华安生物  
HUABIO  
www.huabio.cn

Applications: WB=Western blot IHC-P=Immunohistochemistry (paraffin) IF-Cell=Immunofluorescence (Cell) IF-Tissue=Immunofluorescence (Tissue) FC=Flow cytometry IP=Immunoprecipitation



**Fig1:** Human CA125 on Tris-Bis PAGE under reduced condition. The purity is greater than 95%.



**Fig2:** Immobilized Human CA125, His Tag at 5µg/ml (100µl/Well) on the plate. Dose response curve for Human MSLN, hFc Tag with the EC50 of 1.13µg/ml determined by ELISA.

**Note:** All products are “FOR RESEARCH USE ONLY AND ARE NOT INTENDED FOR DIAGNOSTIC OR THERAPEUTIC USE”.

Hangzhou Huaan Biotechnology Co., Ltd.

Orders:0086-571-88062880

Technical:0086-571-89986345

Service mail:support@huabio.cn

华安生物  
HUABIO  
www.huabio.cn

Applications:WB=Western blot IHC-P=Immunohistochemistry (paraffin) IF-Cell=Immunofluorescence (Cell) IF-Tissue=Immunofluorescence (Tissue) FC=Flow cytometry IP=Immunoprecipitation