

Mouse GFRAL/GFR alpha-like Protein

HA210029



Product name:	Mouse GFRAL/GFR alpha-like Protein
Species reactivity:	Mouse
Protein construction description:	Recombinant Mouse GFRAL/GFR alpha-like Protein is expressed from HEK293 with His tag and Avi tag at the N-Terminus. It contains Gln20-Glu350.[Accession Q6SJE0-1]
Background:	GFR alpha -like (GDNF receptor-alpha-like) is a distant member of the GDNFR family of proteins. Mature human GFR alpha-like is a 376 amino acid (aa) type I transmembrane protein. It contains a 333 aa extracellular domain, a 20 aa transmembrane domain and a 23 aa cytoplasmic domain. GFRAL is a brainstem-restricted receptor for GDF15 which regulates food intake, energy expenditure and body weight in response to metabolic and toxin-induced stresses.
Purity:	> 95% as determined by Tris-Bis PAGE > 95% as determined by HPLC
Endotoxin:	Less than 1EU per µg by the LAL method.
Source:	HEK293
Accession:	Q6SJE0-1
Predicted molecular mass:	The protein has a predicted MW of 40.1 kDa. Due to glycosylation, the protein migrates to 48-60 kDa based on Tris-Bis PAGE result.
Formulation:	Lyophilized from 0.22µm filtered solution in PBS (pH 7.4). Normally 8% trehalose is added as protectant before lyophilization.
Reconstitution:	Centrifuge the tube before opening. Reconstituting to a concentration more than 100 µg/ml is recommended. Dissolve the lyophilized protein in distilled water.
Storage:	-20 to -80°C for 12 months as supplied from date of receipt. -80°C for 3-6 months after reconstitution. 2-8°C for 2-7 days after reconstitution. Recommend to aliquot the protein into smaller quantities for optimal storage. Please minimize freeze-thaw cycles.

Hangzhou Huaan Biotechnology Co., Ltd.

Orders: 0086-571-88062880

Technical: 0086-571-89986345

Service mail: support@huabio.cn

 华安生物
HUABIO
www.huabio.cn

Applications: WB=Western blot IHC-P=Immunohistochemistry (paraffin) IF-Cell=Immunofluorescence (Cell) IF-Tissue=Immunofluorescence (Tissue) FC=Flow cytometry IP=Immunoprecipitation

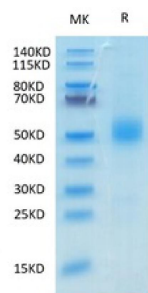


Fig1: Recombinant Mouse GFR alpha-like/GFRAL on Tris-Bis PAGE under reduced condition. The purity is greater than 95%.

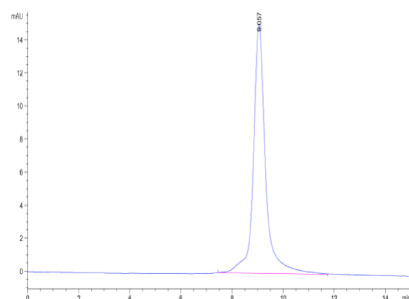


Fig2: The purity of Mouse GFRAL is greater than 95% as determined by SEC-HPLC.

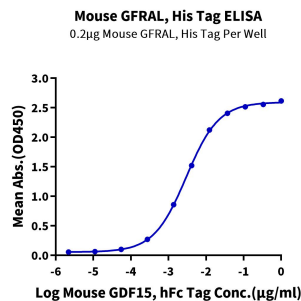


Fig3: Immobilized Mouse GFRAL, His Tag at 2μg/ml (100μl/well) on the plate. Dose response curve for Mouse GDF15, hFc Tag with the EC₅₀ of 3.0ng/ml determined by ELISA (QC Test).

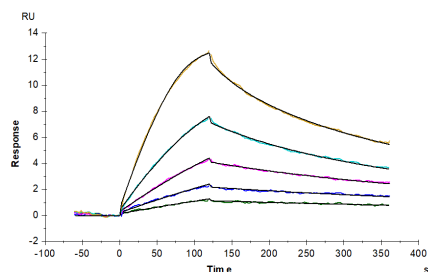


Fig4: Mouse GFRAL, His Tag immobilized on CM5 Chip can bind Mouse GDF15, His Tag with an affinity constant of 0.34 nM as determined in SPR assay (Biacore T200).

Hangzhou Huaan Biotechnology Co., Ltd.

Orders:0086-571-88062880

Technical:0086-571-89986345

Service mail:support@huabio.cn

华安生物
HUABIO
www.huabio.cn

Applications:WB=Western blot IHC-P=Immunohistochemistry (paraffin) IF-Cell=Immunofluorescence (Cell) IF-Tissue=Immunofluorescence (Tissue) FC=Flow cytometry IP=Immunoprecipitation

Note: All products are “FOR RESEARCH USE ONLY AND ARE NOT INTENDED FOR DIAGNOSTIC OR THERAPEUTIC USE”.

Hangzhou Huaan Biotechnology Co., Ltd.

Orders: 0086-571-88062880

Technical: 0086-571-89986345

Service mail: support@huabio.cn

 华安生物
HUAABIO
www.huabio.cn

Applications: WB=Western blot IHC-P=Immunohistochemistry (paraffin) IF-Cell=Immunofluorescence (Cell) IF-Tissue=Immunofluorescence (Tissue) FC=Flow cytometry IP=Immunoprecipitation