

iFluor™ 594 Conjugated Goat anti-Guinea pig IgG Antibody

HA1143



Product Type:	Goat polyclonal IgG, secondary antibodies
Species reactivity:	Guinea pig
Applications:	IHC-Fr, IF-Tissue, IF-Cell

Description: Whole IgG antibodies are isolated as intact molecules from antisera by immunoaffinity chromatography. They have an Fc portion and two antigen binding Fab portions joined together by disulfide bonds and therefore they are divalent. The average molecular weight is reported to be about 160 kDa. The whole IgG form of antibodies is suitable for the majority of immunodetection procedures and is the most cost effective.

Conjugate: iFluor™ 594

Immunogen: Guinea pig IgG protein.

Recommended Dilutions:

IHC-Fr	1:500
IF-Tissue	1:500
IF-Cell	1:500

Storage Buffer: Preservative: 0.02% Sodium azide Constituents: 30% Glycerol, 1% BSA, 68.98% PBS

Storage Instruction: Store at +4℃ after thawing. Aliquot store at -20℃. Avoid repeated freeze / thaw cycles.

Purity: Immunogen affinity purified.

Hangzhou Huaan Biotechnology Co., Ltd.

Orders: 0086-571-88062880

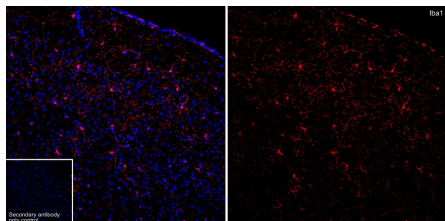
Technical: 0086-571-89986345

Service mail: support@huabio.cn

 华安生物
HUABIO
www.huabio.cn

Applications: WB=Western blot IHC-P=Immunohistochemistry (paraffin) IF-Cell=Immunofluorescence (Cell) IF-Tissue=Immunofluorescence (Tissue) FC=Flow cytometry IP=Immunoprecipitation

Images

**Fig1:** Application: IHC-Fr

Species: Mouse

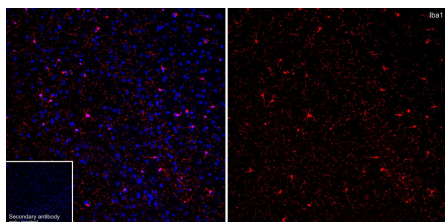
Site: brain

Sample: Frozen section

Primary antibody (HA601368) concentration: 1/500

Secondary Antibody (HA1143) concentration: 1/500

Antigen retrieval: Not required

**Fig2:** Application: IF-Tissue

Species: Mouse

Site: brain

Sample: Paraffin-embedded section

Primary antibody (HA601368) concentration: 1/500

Secondary Antibody (HA1143) concentration: 1/500

Note: All products are "FOR RESEARCH USE ONLY AND ARE NOT INTENDED FOR DIAGNOSTIC OR THERAPEUTIC USE".

Hangzhou Huaan Biotechnology Co., Ltd.

Orders: 0086-571-88062880

Technical: 0086-571-89986345

Service mail: support@huabio.cn

华安生物
HUABIO
www.huabio.cn

Applications: WB=Western blot IHC-P=Immunohistochemistry (paraffin) IF-Cell=Immunofluorescence (Cell) IF-Tissue=Immunofluorescence (Tissue) FC=Flow cytometry IP=Immunoprecipitation