

iFluor™ 594 Conjugated Goat anti-Chicken IgY Antibody

HA1140



Product Type:	Goat polyclonal IgG, secondary antibodies
Species reactivity:	Chicken
Applications:	IHC-Fr, IF-Tissue, IF-Cell

Description: Whole IgG antibodies are isolated as intact molecules from antisera by immunoaffinity chromatography. They have an Fc portion and two antigen binding Fab portions joined together by disulfide bonds and therefore they are divalent. The average molecular weight is reported to be about 160 kDa. The whole IgG form of antibodies is suitable for the majority of immunodetection procedures and is the most cost effective. iFluor™ 594 dyes have fluorescence excitation and emission maxima of ~590 nm and ~610 nm respectively. iFluor™ 594 family is pH-independent from pH 3 to 11. These spectral characteristics make this new dye family an excellent alternative. iFluor™ 594 is much easier to be conjugated with RPE with much higher conjugation yield, and the resulted RPE-iFluor™ 594 tandem has better FRET efficiency. iFluor™ 594 SE is reasonably stable and shows good reactivity and selectivity with protein amino groups.

Conjugate: iFluor™ 594

Immunogen: Recombinant protein.

Recommended Dilutions:

IHC-Fr	1:500-1:1,000
IF-Tissue	1:500-1:1,000
IF-Cell	1:500-1:1,000

Storage Buffer: Preservative: 0.02% Sodium azide Constituents: 30% Glycerol, 1% BSA, 68.98% PBS

Storage Instruction: Store at +4℃ after thawing. Aliquot store at -20℃. Avoid repeated freeze / thaw cycles.

Purity: Immunogen affinity purified.

Hangzhou Huaan Biotechnology Co., Ltd.

Orders:0086-571-88062880

Technical:0086-571-89986345

Service mail:support@huabio.cn

 华安生物
HUABIO
www.huabio.cn

Applications:WB=Western blot IHC-P=Immunohistochemistry (paraffin) IF-Cell=Immunofluorescence (Cell) IF-Tissue=Immunofluorescence (Tissue) FC=Flow cytometry IP=Immunoprecipitation

Images

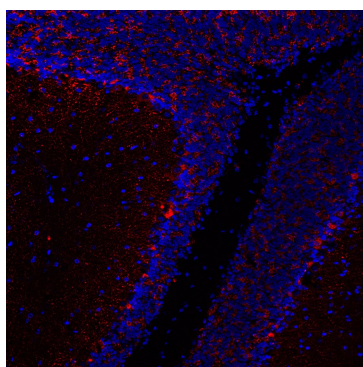


Fig1: Application: IHC-Fr

Species: Mouse

Site: cerebellum

Sample: Frozen section

Primary antibody (HA601471) concentration: 1/200

Secondary Antibody (HA1140) concentration: 1/1,000

Antigen retrieval: Not required

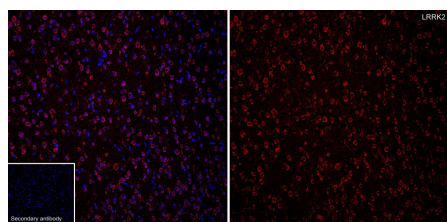


Fig2: Application: IHC-Fr

Species: Rat

Site: brain

Sample: Frozen section

Primary antibody (HA500574) concentration: 1/500

Secondary Antibody (HA1140) concentration: 1/1,000

Antigen retrieval: Not required

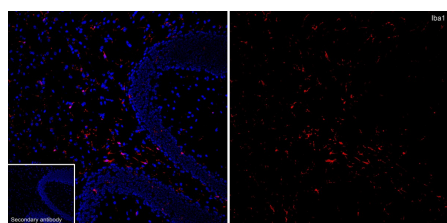


Fig3: Application: IF-Tissue

Species: Mouse

Site: cerebellum

Sample: Paraffin-embedded section

Primary antibody (HA601376) concentration: 1/500

Secondary Antibody (HA1140) concentration: 1/1,000

Note: All products are "FOR RESEARCH USE ONLY AND ARE NOT INTENDED FOR DIAGNOSTIC OR THERAPEUTIC USE".

Hangzhou Huaan Biotechnology Co., Ltd.

Orders:0086-571-88062880

Technical:0086-571-89986345

Service mail:support@huabio.cn

华安生物
HUABIO
www.huabio.cn

Applications:WB=Western blot IHC-P=Immunohistochemistry (paraffin) IF-Cell=Immunofluorescence (Cell) IF-Tissue=Immunofluorescence (Tissue) FC=Flow cytometry IP=Immunoprecipitation