

iFluor™ 488 Conjugated Goat anti-Chicken IgY Antibody

HA1139



Product Type:	Goat polyclonal IgG, secondary antibodies
Species reactivity:	Chicken
Applications:	IHC-Fr, IF-Tissue, IF-Cell

Description: Whole IgG antibodies are isolated as intact molecules from antisera by immunoaffinity chromatography. They have an Fc portion and two antigen binding Fab portions joined together by disulfide bonds and therefore they are divalent. The average molecular weight is reported to be about 160 kDa. The whole IgG form of antibodies is suitable for the majority of immunodetection procedures and is the most cost effective. Although FITC is still the most popular fluorescent labeling dye for preparing green fluorescent bioconjugates, there are certain limitations with FITC, such as severe photobleaching for microscope imaging and pH-sensitive fluorescence. Protein conjugates prepared with iFluor™ 488 dyes are far superior compared to conjugates of fluorescein derivatives such as FITC. iFluor™ 488 conjugates are significantly brighter than fluorescein conjugates and are much more photostable. Additionally, the fluorescence of iFluor™ 488 is not affected by pH (4-10). This pH insensitivity is a major improvement over fluorescein, which emits its maximum fluorescence only at pH above 9. iFluor™ 488 SE dye is reasonably stable and shows good reactivity and selectivity with protein amino groups.

Conjugate: iFluor™ 488

Immunogen: Recombinant protein.

Recommended Dilutions:

IHC-Fr	1:500-1:1,000
IF-Tissue	1:500-1:1,000
IF-Cell	1:500-1:1,000

Storage Buffer: Preservative: 0.02% Sodium azide Constituents: 30% Glycerol, 1% BSA, 68.98% PBS

Storage Instruction: Store at +4℃ after thawing. Aliquot store at -20℃. Avoid repeated freeze / thaw cycles.

Purity: Immunogen affinity purified.

Hangzhou Huaan Biotechnology Co., Ltd.

Orders:0086-571-88062880

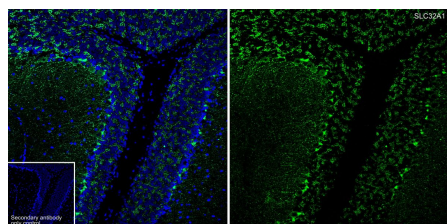
Technical:0086-571-89986345

Service mail:support@huabio.cn

华安生物
HUABIO
www.huabio.cn

Applications:WB=Western blot IHC-P=Immunohistochemistry (paraffin) IF-Cell=Immunofluorescence (Cell) IF-Tissue=Immunofluorescence (Tissue) FC=Flow cytometry IP=Immunoprecipitation

Images

**Fig1:** Application: IHC-Fr

Species: Mouse

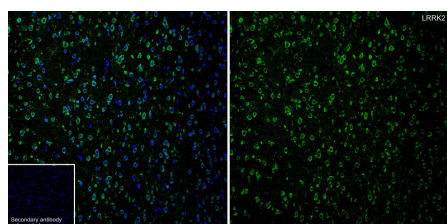
Site: cerebellum

Sample: Frozen section

Primary antibody (HA601471) concentration: 1/200

Secondary Antibody (HA1139) concentration: 1/1,000

Antigen retrieval: Not required

**Fig2:** Application: IHC-Fr

Species: Rat

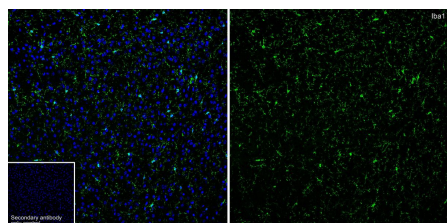
Site: brain

Sample: Frozen section

Primary antibody (HA500574) concentration: 1/500

Secondary Antibody (HA1139) concentration: 1/1,000

Antigen retrieval: Not required

**Fig3:** Application: IHC-Fr

Species: Mouse

Site: brain

Sample: Frozen section

Primary antibody (HA601376) concentration: 1/500

Secondary Antibody (HA1139) concentration: 1/1,000

Antigen retrieval: Not required

Hangzhou Huaan Biotechnology Co., Ltd.

Orders:0086-571-88062880

Technical:0086-571-89986345

Service mail:support@huabio.cn


 华安生物
 HUABIO
 www.huabio.cn

Applications:WB=Western blot IHC-P=Immunohistochemistry (paraffin) IF-Cell=Immunofluorescence (Cell) IF-Tissue=Immunofluorescence (Tissue) FC=Flow cytometry IP=Immunoprecipitation

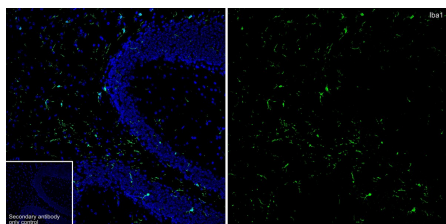


Fig4: Application: IF-Tissue

Species: Mouse

Site: cerebellum

Sample: Paraffin-embedded section

Primary antibody (HA601376) concentration: 1/500

Secondary Antibody (HA1139) concentration: 1/1,000

Note: All products are “FOR RESEARCH USE ONLY AND ARE NOT INTENDED FOR DIAGNOSTIC OR THERAPEUTIC USE”.

Hangzhou Huaan Biotechnology Co., Ltd.

Orders:0086-571-88062880

Technical:0086-571-89986345

Service mail:support@huabio.cn

华安生物
HUAABIO
www.huabio.cn

Applications:WB=Western blot IHC-P=Immunohistochemistry (paraffin) IF-Cell=Immunofluorescence (Cell) IF-Tissue=Immunofluorescence (Tissue) FC=Flow cytometry IP=Immunoprecipitation