

iFluor™ 680se Conjugated Goat anti-mouse IgG polyclonal Antibody(For Odyssey system)

HA1130



Product Type: Goat polyclonal IgG, secondary antibodies

Species reactivity: Mouse

Applications: WB

Description: Whole IgG antibodies are isolated as intact molecules from antisera by immunoaffinity chromatography. They have an Fc portion and two antigen binding Fab portions joined together by disulfide bonds and therefore they are divalent. The average molecular weight is reported to be about 160 kDa. The whole IgG form of antibodies is suitable for the majority of immunodetection procedures and is the most cost effective.

Conjugate: iFluor™ 680se

Immunogen: Mouse IgG (H+L).

Recommended Dilutions:
WB 1:5,000-1:10,000

Storage Buffer: Preservative: 0.02% Sodium azide Constituents: 30% Glycerol, 1% BSA, 68.98% PBS

Storage Instruction: Store at +4℃ after thawing. Aliquot store at -20℃. Avoid repeated freeze / thaw cycles.

Purity: Immunogen affinity purified.

Hangzhou Huaan Biotechnology Co., Ltd.

Orders:0086-571-88062880

Technical:0086-571-89986345

Service mail:support@huabio.cn

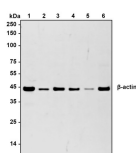
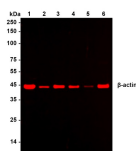
 华安生物
HUABIO
www.huabio.cn

Applications:WB=Western blot IHC-P=Immunohistochemistry (paraffin) IF-Cell=Immunofluorescence (Cell) IF-Tissue=Immunofluorescence (Tissue) FC=Flow cytometry IP=Immunoprecipitation

Images

Fig1: Western blot analysis of β -actin on different lysates with Mouse anti- β -actin antibody at 1/10,000 dilution.

Lane 1: EA.hy926 cell lysate
 Lane 2: HepG2 cell lysate
 Lane 3: MDA-MB-231 cell lysate
 Lane 4: bEnd.3 cell lysate
 Lane 5: PC-12 cell lysate
 Lane 6: C6 cell lysate



Lysates/proteins at 20 μ g/Lane.

Predicted band size: 42 kDa

Observed band size: 42 kDa

4-20% SDS-PAGE gel.

Proteins were transferred to a PVDF membrane and blocked with 5% NFDM/TBST for 1 hour at room temperature. The primary antibody (EM21002) at 1/10,000 dilution was used in TBST at room temperature for 2 hours. Goat Anti-Mouse IgG - iFluor™ 680se Secondary Antibody (HA1130) at 1/10,000 dilution was used for 1 hour at room temperature and then imaged using the Licor Odyssey CLx.

Note: All products are "FOR RESEARCH USE ONLY AND ARE NOT INTENDED FOR DIAGNOSTIC OR THERAPEUTIC USE".

Hangzhou Huaan Biotechnology Co., Ltd.

Orders:0086-571-88062880

Technical:0086-571-89986345

Service mail:support@huabio.cn

华安生物
 HUABIO
 www.huabio.cn

Applications:WB=Western blot IHC-P=Immunohistochemistry (paraffin) IF-Cell=Immunofluorescence (Cell) IF-Tissue=Immunofluorescence (Tissue) FC=Flow cytometry IP=Immunoprecipitation