

# Rabbit Anti-Mouse IgG polyclonal Antibody

## HA1030



<b>Product Type:</b>	Rabbit polyclonal IgG, secondary antibodies
<b>Species reactivity:</b>	Mouse
<b>Applications:</b>	WB, ELISA, IP

**Description:** Whole IgG antibodies are isolated as intact molecules from antisera by immunoaffinity chromatography. They have an Fc portion and two antigen binding Fab portions joined together by disulfide bonds and therefore they are divalent. The average molecular weight is reported to be about 160 kDa. The whole IgG form of antibodies is suitable for the majority of immunodetection procedures and is the most cost effective.

**Immunogen:** Mouse IgG

**Positive control:** Mouse IgG.

**Recommended Dilutions:**

<b>WB</b>	1:1000-1:5000
<b>ELISA</b>	1:1000-1:5000
<b>IP</b>	1:2000

**Storage Buffer:** 1\*PBS (pH7.4).

**Storage Instruction:** Store at +4°C after thawing. Aliquot store at -20°C. Avoid repeated freeze / thaw cycles.

**Purity:** Mouse IgG affinity purified.

Hangzhou Huaan Biotechnology Co., Ltd.

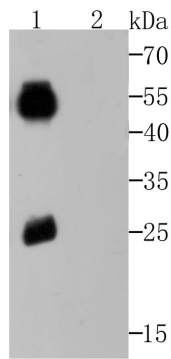
Orders:0086-571-88062880

Technical:0086-571-89986345

Service mail:support@huabio.cn

 华安生物  
HUABIO  
www.huabio.cn

## Images



**Fig1:** Western blot analysis of Rabbit Anti-Mouse IgG on different lysates. Proteins were transferred to a PVDF membrane and blocked with 5% BSA in PBS for 1 hour at room temperature. The primary antibody (HA1030, 1/500) was used in 5% BSA at room temperature for 2 hours. Goat Anti-Rabbit IgG - HRP Secondary Antibody (HA1001) at 1:5,000 dilution was used for 1 hour at room temperature.

**Positive control:**

Lane 1: Mouse IgG lysate

Lane 2: Human IgG lysate

**Note:** All products are "FOR RESEARCH USE ONLY AND ARE NOT INTENDED FOR DIAGNOSTIC OR THERAPEUTIC USE".

Hangzhou Huaan Biotechnology Co., Ltd.

Orders:0086-571-88062880

Technical:0086-571-89986345

Service mail:support@huabio.cn

华安生物  
HUABIO  
www.huabio.cn