

Anti-APLP2 Antibody [JE54-62]

ET7110-78



Product Type:	Recombinant Rabbit monoclonal IgG, primary antibodies
Species reactivity:	Human, Rat
Applications:	WB, IHC-P
Molecular Wt:	Predicted band size: 87 kDa
Clone number:	JE54-62

Description: This gene encodes amyloid precursor- like protein 2 (APLP2), which is a member of the APP (amyloid precursor protein) family including APP, APLP1 and APLP2. This protein is ubiquitously expressed. It contains heparin-, copper- and zinc- binding domains at the N-terminus, BPTI/Kunitz inhibitor and E2 domains in the middle region, and transmembrane and intracellular domains at the C-terminus. This protein interacts with major histocompatibility complex (MHC) class I molecules. The synergy of this protein and the APP is required to mediate neuromuscular transmission, spatial learning and synaptic plasticity. This protein has been implicated in the pathogenesis of Alzheimer's disease. Multiple alternatively spliced transcript variants encoding different isoforms have been identified.

Immunogen: Recombinant protein within Human APLP2 aa 201-300 / 763.

Positive control: Rat brain tissue lysate, human placenta tissue lysate, Hela cell lysate, rat testis tissue, human kidney tissue.

Subcellular location: Nucleus, cell membrane.

Database links: SwissProt: Q06481 Human | P15943 Rat

Recommended Dilutions:

WB	1:500-1:1,000
IHC-P	1:200-1:1,000

Storage Buffer: 1*TBS (pH7.4), 0.05% BSA, 40% Glycerol. Preservative: 0.05% Sodium Azide.

Storage Instruction: Shipped at 4°C. Store at +4°C short term (1-2 weeks). It is recommended to aliquot into single-use upon delivery. Store at -20°C long term.

Purity: Protein A affinity purified.

Hangzhou Huaan Biotechnology Co., Ltd.

Orders:0086-571-88062880

Technical:0086-571-89986345

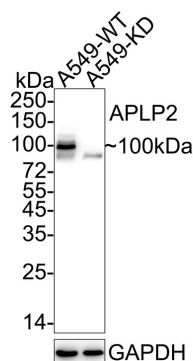
Service mail:support@huabio.cn

 华安生物
HUABIO
www.huabio.cn

Images

Fig1: Western blot analysis of APLP2 on different lysates with Rabbit anti-APLP2 antibody (ET7110-78) at 1/1,000 dilution.

Lane 1: A549-WT cell lysate
Lane 2: A549-KD APLP2 cell lysate



Lysates/proteins at 10 µg/Lane.

Predicted band size: 87 kDa
Observed band size: 100 kDa

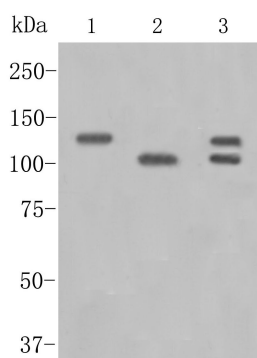
Exposure time: 2 minutes 10 seconds; ECL: K1801;

4-20% SDS-PAGE gel.

Proteins were transferred to a PVDF membrane and blocked with 5% NFDM/TBST for 1 hour at room temperature. The primary antibody (ET7110-78) at 1/1,000 dilution was used in 5% BSA at 4°C overnight. Goat Anti-Rabbit IgG - HRP Secondary Antibody (HA1001) at 1/50,000 dilution was used for 1 hour at room temperature.

Fig2: Western blot analysis of APLP2 on different lysates with Rabbit anti-APLP2 antibody (ET7110-78) at 1/500 dilution.

Lane 1: Rat brain tissue lysate(20 µg/Lane)
Lane 2: Human placenta tissue lysate(20 µg/Lane)
Lane 3: Hela cell lysate



Lysates/proteins at 10 µg/Lane.

Predicted band size: 87 kDa
Observed band size: 100/120 kDa

Exposure time: 2 minutes;

8% SDS-PAGE gel.

Proteins were transferred to a PVDF membrane and blocked with 5% NFDM/TBST for 1 hour at room temperature. The primary antibody (ET7110-78) at 1/1,000 dilution was used in 5% NFDM/TBST at room temperature for 2 hours. Goat Anti-Rabbit IgG - HRP Secondary Antibody (HA1001) at 1:5,000 dilution was used for 1 hour at room temperature.

Hangzhou Huaan Biotechnology Co., Ltd.

Orders:0086-571-88062880

Technical:0086-571-89986345

Service mail:support@huabio.cn

华安生物
HUABIO
www.huabio.cn

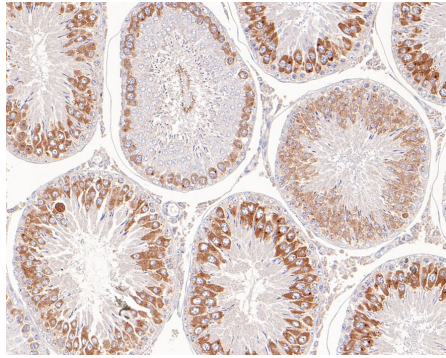


Fig3: Immunohistochemical analysis of paraffin-embedded rat testis tissue with Rabbit anti-APLP2 antibody (ET7110-78) at 1/50 dilution.

The section was pre-treated using heat mediated antigen retrieval with sodium citrate buffer (pH 6.0) (high pressure) for 2 minutes. The tissues were blocked in 1% BSA for 20 minutes at room temperature, washed with ddH₂O and PBS, and then probed with the primary antibody (ET7110-78) at 1/50 dilution for 1 hour at room temperature. The detection was performed using an HRP conjugated compact polymer system. DAB was used as the chromogen. Tissues were counterstained with hematoxylin and mounted with DPX.

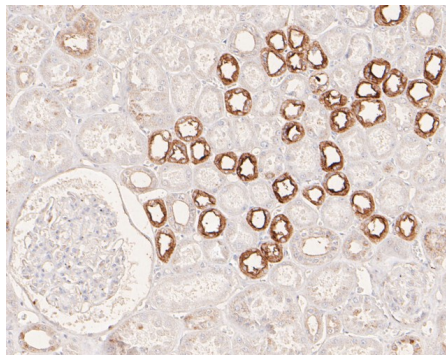


Fig4: Immunohistochemical analysis of paraffin-embedded human kidney tissue with Rabbit anti-APLP2 antibody (ET7110-78) at 1/50 dilution.

The section was pre-treated using heat mediated antigen retrieval with sodium citrate buffer (pH 6.0) (high pressure) for 2 minutes. The tissues were blocked in 1% BSA for 20 minutes at room temperature, washed with ddH₂O and PBS, and then probed with the primary antibody (ET7110-78) at 1/50 dilution for 1 hour at room temperature. The detection was performed using an HRP conjugated compact polymer system. DAB was used as the chromogen. Tissues were counterstained with hematoxylin and mounted with DPX.

Note: All products are "FOR RESEARCH USE ONLY AND ARE NOT INTENDED FOR DIAGNOSTIC OR THERAPEUTIC USE".

Background References

1. Gao L. et. al. Role of APLP2 in the prognosis and clinicopathology of renal cell carcinoma. *Oncol Lett.* 2019 Jan.
2. Wang X. et. al. APLP2 Modulates JNK-Dependent Cell Migration in *Drosophila*. *Biomed Res Int.* 2018 Jul.

Hangzhou Huaan Biotechnology Co., Ltd.

Orders:0086-571-88062880

Technical:0086-571-89986345

Service mail:support@huabio.cn

华安生物
HUABIO
www.huabio.cn