

Anti-KDM5A Antibody [JB36-60]

ET7107-43



Product Type:	Recombinant Rabbit monoclonal IgG, primary antibodies
Species reactivity:	Human
Applications:	WB, IF-Cell, IF-Tissue, FC
Molecular Wt:	Predicted band size: 192 kDa
Clone number:	JB36-60

Description: Lysine-specific demethylase 5A is an enzyme that in humans is encoded by the KDM5A gene. The protein encoded by this gene is a ubiquitously expressed nuclear protein. It binds directly, with several other proteins, to retinoblastoma protein which regulates cell proliferation. It was formerly known as Retinoblastoma Binding Protein 2 (RBP2). This protein also interacts with rhombotin-2 which functions distinctly in erythropoiesis and in T-cell leukemogenesis. Rhombotin-2 is thought to either directly affect the activity of the encoded protein or may indirectly modulate the functions of the retinoblastoma protein by binding to this protein. Alternatively spliced transcript variants encoding distinct isoforms have been found for this gene. The Drosophila homolog, LID, was found to be an H3K4 histone demethylase that binds to c-Myc. It was recently renamed to Lysine Demethylase 5 (KDM5). Enzymatically can be designated as a trimethyllysine dioxygenase, which is a member of the alpha-ketoglutarate-dependent hydroxylase superfamily (EC 1.14.11.8).

Immunogen: Recombinant protein within Human KDM5A aa 1,360-1,690 / 1,690.

Positive control: A549 cell lysate, Hela cell lysate, A549, SiHa, SH-SY5Y.

Subcellular location: Nucleus.

Database links: SwissProt: P29375 Human

Recommended Dilutions:

WB	1:1,000-1:2,000
IF-Cell	1:50-1:400
FC	1:50-1:100

Storage Buffer: 1*TBS (pH7.4), 0.05% BSA, 40% Glycerol. Preservative: 0.05% Sodium Azide.

Storage Instruction: Shipped at 4°C. Store at +4°C short term (1-2 weeks). It is recommended to aliquot into single-use upon delivery. Store at -20°C long term.

Purity: Protein A affinity purified.

Hangzhou Huaan Biotechnology Co., Ltd.

Orders:0086-571-88062880

Technical:0086-571-89986345

Service mail:support@huabio.cn

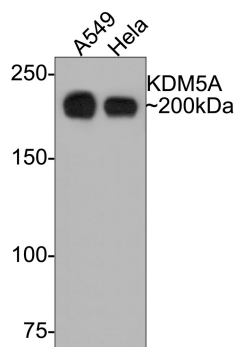
 华安生物
HUABIO
www.huabio.cn

Images

Fig1: Western blot analysis of KDM5A on different lysates with Rabbit anti-KDM5A antibody (ET7107-43) at 1/1,000 dilution.

Lane 1: A549 cell lysate

Lane 2: HeLa cell lysate



Lysates/proteins at 10 µg/Lane.

Predicted band size: 192 kDa

Observed band size: 200 kDa

Exposure time: 2 minutes;

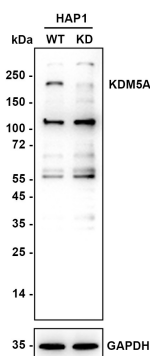
6% SDS-PAGE gel.

Proteins were transferred to a PVDF membrane and blocked with 5% NFDM/TBST for 1 hour at room temperature. The primary antibody (ET7107-43) at 1/1,000 dilution was used in 5% NFDM/TBST at room temperature for 2 hours. Goat Anti-Rabbit IgG - HRP Secondary Antibody (HA1001) at 1:300,000 dilution was used for 1 hour at room temperature.

Fig2: Western blot analysis of KDM5A on different lysates with Rabbit anti-KDM5A antibody (ET7107-43) at 1/2,000 dilution.

Lane 1: HAP1-parental cell lysate, 10 µg/Lane

Lane 2: HAP1-KDM5A KD cell lysate, 10 µg/Lane



Predicted band size: 192 kDa

Observed band size: 200 kDa

Exposure time: 180 seconds; ECL: K1801;

4-20% SDS-PAGE gel.

Proteins were transferred to a PVDF membrane and blocked with 5% NFDM/TBST for 1 hour at room temperature. The primary antibody (ET7107-43) at 1/2,000 dilution was used in K1803 at 4°C overnight. Goat Anti-Rabbit IgG - HRP Secondary Antibody (HA1001) at 1/50,000 dilution was used for 1 hour at room temperature.

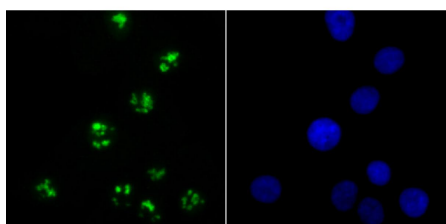


Fig3: ICC staining of KDM5A in A549 cells (green). Formalin fixed cells were permeabilized with 0.1% Triton X-100 in TBS for 10 minutes at room temperature and blocked with 10% negative goat serum for 15 minutes at room temperature. Cells were probed with the primary antibody (ET7107-43, 1/50) for 1 hour at room temperature, washed with PBS. Alexa Fluor®488 conjugate-Goat anti-Rabbit IgG was used as the secondary antibody at 1/1,000 dilution. The nuclear counter stain is DAPI (blue).

Hangzhou Huaan Biotechnology Co., Ltd.

Orders:0086-571-88062880

Technical:0086-571-89986345

Service mail:support@huabio.cn

华安生物
HUABIO
www.huabio.cn

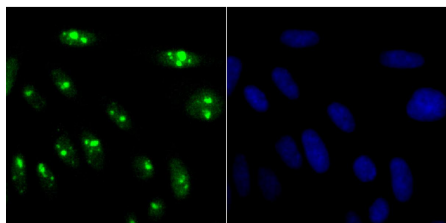


Fig4: ICC staining of KDM5A in SiHa cells (green). Formalin fixed cells were permeabilized with 0.1% Triton X-100 in TBS for 10 minutes at room temperature and blocked with 10% negative goat serum for 15 minutes at room temperature. Cells were probed with the primary antibody (ET7107-43, 1/50) for 1 hour at room temperature, washed with PBS. Alexa Fluor®488 conjugate-Goat anti-Rabbit IgG was used as the secondary antibody at 1/1,000 dilution. The nuclear counter stain is DAPI (blue).

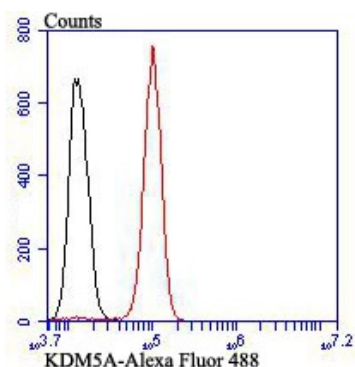


Fig5: Flow cytometric analysis of KDM5A was done on SH-SY5Y cells. The cells were fixed, permeabilized and stained with the primary antibody (ET7107-43, 1/50) (red). After incubation of the primary antibody at room temperature for an hour, the cells were stained with a Alexa Fluor®488 conjugate-Goat anti-Rabbit IgG Secondary antibody at 1/1,000 dilution for 30 minutes. Unlabelled sample was used as a control (cells without incubation with primary antibody; black).

Note: All products are “FOR RESEARCH USE ONLY AND ARE NOT INTENDED FOR DIAGNOSTIC OR THERAPEUTIC USE”.

Background References

1. Chan S W et al. Retinoblastoma-binding protein 2 (Rbp2) potentiates nuclear hormone receptor-mediated transcription. *J Biol Chem* 276:28402-28412 (2001).
2. Benevolenskaya E V et al. Binding of pRB to the PHD protein RBP2 promotes cellular differentiation. *Mol Cell* 18:623-635 (2005).

Hangzhou Huaan Biotechnology Co., Ltd.

Orders:0086-571-88062880

Technical:0086-571-89986345

Service mail:support@huabio.cn

华安生物
HUABIO
www.huabio.cn