

Anti-Involucrin Antibody [JU30-27]

ET1706-32



Product Type:	Recombinant Rabbit monoclonal IgG, primary antibodies
Species reactivity:	Human, Rat
Applications:	WB, IHC-P, FC
Molecular Wt:	120 kDa
Clone number:	JU30-27

Description: Involucrin is a precursor protein of the keratinocyte cornified envelope, which is formed beneath the inner surface of the cell membrane during terminal differentiation. During keratinocyte terminal differentiation, glutamine residues of involucrin become covalently cross-linked to other envelope precursors via covalent epsilon-(gamma-glutamyl) lysine bonds. Moreover, its large size allows involucrin to cross-link molecules that are separated by substantial distances in the cornified envelope. These properties allow a single involucrin molecule to form multiple cross-links, in multiple spatial planes, with other envelope precursors.

Immunogen: Synthetic peptide within Human Involucrin aa 131-180 / 585.

Positive control: Human skin tissue lysates, human lung carcinoma tissue, A431.

Subcellular location: Cytoplasm.

Database links: SwissProt: P07476 Human | P48998 Rat

Recommended Dilutions:

WB	1:500-1:2,000
IHC-P	1:50-1:200
FC	1:50-1:200

Storage Buffer: 1*TBS (pH7.4), 0.05% BSA, 40% Glycerol. Preservative: 0.05% Sodium Azide.

Storage Instruction: Shipped at 4°C. Store at +4°C short term (1-2 weeks). It is recommended to aliquot into single-use upon delivery. Store at -20°C long term.

Purity: Protein A affinity purified.

Hangzhou Huaan Biotechnology Co., Ltd.

Orders:0086-571-88062880

Technical:0086-571-89986345

Service mail:support@huabio.cn

华安生物
HUABIO
www.huabio.cn

Images

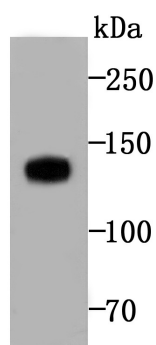


Fig1: Western blot analysis of Involucrin on human skin tissue lysates with Rabbit anti-Involucrin antibody (ET1706-32) at 1/500 dilution.

Lysates/proteins at 20 µg/Lane.

Predicted band size: 120 kDa

Observed band size: 120 kDa

Exposure time: 2 minutes;

8% SDS-PAGE gel.

Proteins were transferred to a PVDF membrane and blocked with 5% NFDM/TBST for 1 hour at room temperature. The primary antibody (ET1706-32) at 1/500 dilution was used in 5% NFDM/TBST at room temperature for 2 hours. Goat Anti-Rabbit IgG - HRP Secondary Antibody (HA1001) at 1:200,000 dilution was used for 1 hour at room temperature.

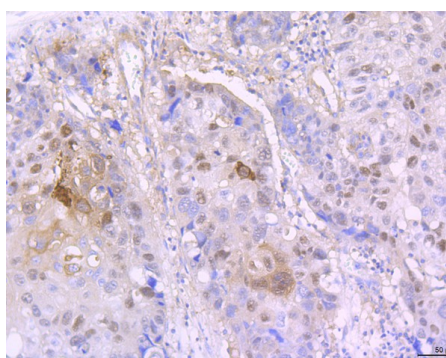


Fig2: Immunohistochemical analysis of paraffin-embedded human lung carcinoma tissue with Rabbit anti-Involucrin antibody (ET1706-32) at 1/50 dilution.

The section was pre-treated using heat mediated antigen retrieval with Tris-EDTA buffer (pH 8.0-8.4) for 20 minutes. The tissues were blocked in 1% BSA for 20 minutes at room temperature, washed with ddH₂O and PBS, and then probed with the primary antibody (ET1706-32) at 1/50 dilution for 0.5 hour at room temperature. The detection was performed using an HRP conjugated compact polymer system. DAB was used as the chromogen. Tissues were counterstained with hematoxylin and mounted with DPX.

Hangzhou Huaan Biotechnology Co., Ltd.

Orders:0086-571-88062880

Technical:0086-571-89986345

Service mail:support@huabio.cn

华安生物
HUABIO
www.huabio.cn

Note: All products are "FOR RESEARCH USE ONLY AND ARE NOT INTENDED FOR DIAGNOSTIC OR THERAPEUTIC USE".

Background References

1. Dziunycz PJ et al. CYFIP1 is directly controlled by NOTCH1 and down-regulated in cutaneous squamous cell carcinoma. PLoS One 12:e0173000 (2017).
2. Kim BR et al. SOX2 and PI3K Cooperate to Induce and Stabilize a Squamous-Committed Stem Cell Injury State during Lung Squamous Cell Carcinoma Pathogenesis. PLoS Biol 14:e1002581 (2016).

Hangzhou Huaan Biotechnology Co., Ltd.

Orders:0086-571-88062880

Technical:0086-571-89986345

Service mail:support@huabio.cn

 华安生物
HUAABIO
www.huabio.cn