

Anti-Plexin A1 Antibody [JU50-37]

ET1706-17



Product Type:	Recombinant Rabbit monoclonal IgG, primary antibodies
Species reactivity:	Human, Mouse, Rat
Applications:	WB
Molecular Wt:	Predicted band size: 211 kDa
Clone number:	JU50-37

Description: Coreceptor for SEMA3A, SEMA3C, SEMA3F and SEMA6D. Necessary for signaling by class 3 semaphorins and subsequent remodeling of the cytoskeleton. Plays a role in axon guidance, invasive growth and cell migration. Class 3 semaphorins bind to a complex composed of a neuropilin and a plexin. The plexin modulates the affinity of the complex for specific semaphorins, and its cytoplasmic domain is required for the activation of downstream signaling events in the cytoplasm.

Immunogen: Recombinant protein within Human Plexin A1 aa 100-200 / 1,896.

Positive control: K-562 cell lysate, HUVEC cell lysate, Mouse brain tissue lysate, Rat brain tissue lysate.

Subcellular location: Cell membrane.

Database links: SwissProt: Q9UIW2 Human | P70206 Mouse | D3Z981 Rat

Recommended Dilutions:

WB 1:1,000

Storage Buffer: 1*TBS (pH7.4), 0.05% BSA, 40% Glycerol. Preservative: 0.05% Sodium Azide.

Storage Instruction: Shipped at 4°C. Store at +4°C short term (1-2 weeks). It is recommended to aliquot into single-use upon delivery. Store at -20°C long term.

Purity: Protein A affinity purified.

Hangzhou Huaan Biotechnology Co., Ltd.

Orders:0086-571-88062880

Technical:0086-571-89986345

Service mail:support@huabio.cn

 华安生物
HUABIO
www.huabio.cn

Images

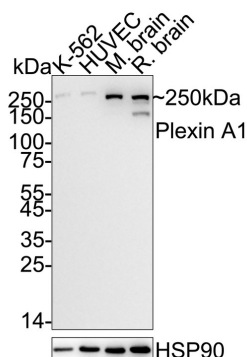


Fig1: Western blot analysis of Plexin A1 on different lysates with Rabbit anti-Plexin A1 antibody (ET1706-17) at 1/1,000 dilution.

Lane 1: K-562 cell lysate (20 µg/Lane)

Lane 2: HUVEC cell lysate (20 µg/Lane)

Lane 3: Mouse brain tissue lysate (40 µg/Lane)

Lane 4: Rat brain tissue lysate (40 µg/Lane)

Predicted band size: 211 kDa

Observed band size: 250 kDa

Exposure time: 3 minutes; ECL: K1801;

4-20% SDS-PAGE gel.

Proteins were transferred to a PVDF membrane and blocked with 5% NFDM/TBST for 1 hour at room temperature. The primary antibody (ET1706-17) at 1/1,000 dilution was used in 5% NFDM/TBST at 4°C overnight. Goat Anti-Rabbit IgG - HRP Secondary Antibody (HA1001) at 1/50,000 dilution was used for 1 hour at room temperature.

Note: All products are "FOR RESEARCH USE ONLY AND ARE NOT INTENDED FOR DIAGNOSTIC OR THERAPEUTIC USE".

Background References

1. Delloye-Bourgeois C et al. PlexinA1 is a new Slit receptor and mediates axon guidance function of Slit C-terminal fragments. *Nat Neurosci* 18:36-45 (2015).
2. Hernandez-Enriquez B et al. Floor plate-derived neuropilin-2 functions as a secreted semaphorin sink to facilitate commissural axon midline crossing. *Genes Dev* 29:2617-32 (2015).

Hangzhou Huaan Biotechnology Co., Ltd.

Orders:0086-571-88062880

Technical:0086-571-89986345

Service mail:support@huabio.cn

华安生物
HUABIO
www.huabio.cn