

Anti-DDAH1 Antibody [JM53-18]

ET1705-71



Product Type:	Recombinant Rabbit monoclonal IgG, primary antibodies
Species reactivity:	Human
Applications:	WB, IP
Molecular Wt:	Predicted band size: 31 kDa
Clone number:	JM53-18

Description: DDAH, a dimethylarginine dimethylaminohydrolase, hydrolyzes dimethyl arginine (ADMA) and monomethyl arginine (MMA), both inhibitors of nitric oxide synthases, and may be involved in in-vivo modulation of nitric oxide production. Impairment of DDAH causes ADMA accumulation and a reduction in cGMP generation. DDAH II, the predominant DDAH isoform in endothelial cells, facilitates the induction of nitric oxide synthesis by all-trans-Retinoic acid (atRA). DDAH proteins are highly expressed in colon, kidney, stomach and liver tissues.

Immunogen: Recombinant protein within Human DDAH1 aa 100-285 / 285.

Positive control: SH-SY5Y cell lysate, HepG2 cell lysate, HUVEC cell lysate, human prostate tissue, human kidney tissue.

Subcellular location: Cytoplasm.

Database links: SwissProt: O94760 Human

Recommended Dilutions:

WB	1:5,000
IP	Use at an assay dependent concentration.

Storage Buffer: 1*TBS (pH7.4), 0.05% BSA, 40% Glycerol. Preservative: 0.05% Sodium Azide.

Storage Instruction: Shipped at 4°C. Store at +4°C short term (1-2 weeks). It is recommended to aliquot into single-use upon delivery. Store at -20°C long term.

Purity: Protein A affinity purified.

Hangzhou Huaan Biotechnology Co., Ltd.

Orders:0086-571-88062880

Technical:0086-571-89986345

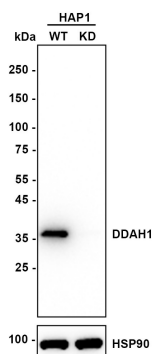
Service mail:support@huabio.cn

华安生物
HUABIO
www.huabio.cn

Images

Fig1: Western blot analysis of DDAH1 on different lysates with Rabbit anti-DDAH1 antibody (ET1705-71) at 1/5,000 dilution.

Lane 1: HAP1-parental cell lysate
Lane 2: HAP1-DDAH1 KD cell lysate



Lysates/proteins at 10 µg/Lane.

Predicted band size: 31 kDa

Observed band size: 37 kDa

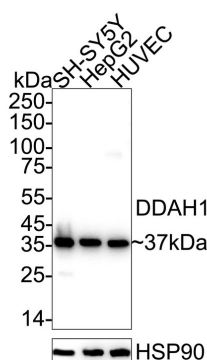
Exposure time: 20 seconds; ECL: K1801;

4-20% SDS-PAGE gel.

Proteins were transferred to a PVDF membrane and blocked with 5% NFDM/TBST for 1 hour at room temperature. The primary antibody (ET1705-71) at 1/5,000 dilution was used in K1803 at 4°C overnight. Goat Anti-Rabbit IgG - HRP Secondary Antibody (HA1001) at 1/50,000 dilution was used for 1 hour at room temperature.

Fig2: Western blot analysis of DDAH1 on different lysates with Rabbit anti-DDAH1 antibody (ET1705-71) at 1/5,000 dilution.

Lane 1: SH-SY5Y cell lysate
Lane 2: HepG2 cell lysate
Lane 3: HUVEC cell lysate



Lysates/proteins at 20 µg/Lane.

Predicted band size: 31 kDa

Observed band size: 37 kDa

Exposure time: 10 seconds; ECL: K1801;

4-20% SDS-PAGE gel.

Proteins were transferred to a PVDF membrane and blocked with 5% NFDM/TBST for 1 hour at room temperature. The primary antibody (ET1705-71) at 1/5,000 dilution was used in primary antibody dilution (K1803) at 4°C overnight. Goat Anti-Rabbit IgG - HRP Secondary Antibody (HA1001) at 1/50,000 dilution was used for 1 hour at room temperature.

Hangzhou Huaan Biotechnology Co., Ltd.

Orders:0086-571-88062880

Technical:0086-571-89986345

Service mail:support@huabio.cn

华安生物
HUABIO
www.huabio.cn

Note: All products are "FOR RESEARCH USE ONLY AND ARE NOT INTENDED FOR DIAGNOSTIC OR THERAPEUTIC USE".

Background References

1. Wang H et al. DDAH1 plays dual roles in PM2.5 induced cell death in A549 cells. *Biochim Biophys Acta* 1860:2793-801 (2016).
2. Jung CS et al. Endogenous nitric-oxide synthase inhibitor ADMA after acute brain injury. *Int J Mol Sci* 15:4088-103 (2014).

Hangzhou Huaan Biotechnology Co., Ltd.

Orders:0086-571-88062880

Technical:0086-571-89986345

Service mail:support@huabio.cn

 华安生物
HUAABIO
www.huabio.cn