

Anti-KMT5A / SETD8 / Pr-SET7 Antibody [JM73-43] ET1705-59



Product Type:	Recombinant Rabbit monoclonal IgG, primary antibodies
Species reactivity:	Human, Mouse
Applications:	WB, FC
Molecular Wt:	Predicted band size: 43 kDa
Clone number:	JM73-43

Description: Protein-lysine N-methyltransferase that monomethylates both histones and non-histone proteins. All monomethylates 'Lys-20' of histone H4 (H4K20me1). H4K20me1 is enriched during mitosis and represents a specific tag for epigenetic transcriptional repression. Mainly functions in euchromatin regions, benefiting playing a central role in the silencing of euchromatic genes. Required for cell proliferation, probably by contributing to the maintenance of proper higher order structure of DNA during mitosis. Involved in chromosome condensation and proper cytokinesis. Nucleosomes are preferred as substrate compared to free histones. Mediates monomethylation of p53 / TP53 at 'Lys-382', leading to repress p53 / TP53-target genes.

Immunogen: Synthetic peptide within Human KMT5A aa 51-100 / 393.

Positive control: Mouse kidney tissue lysates, Mouse liver tissue lysates, 293T cell lysates, 293 cell lysates, 293T cells.

Subcellular location: Nucleus.

Database links: SwissProt: Q9NQR1 Human | Q2YDW7 Mouse

Recommended Dilutions:

WB	1:500-1:2,000
FC	1:50-1:100

Storage Buffer: 1*TBS (pH7.4), 0.05% BSA, 40% Glycerol. Preservative: 0.05% Sodium Azide.

Storage Instruction: Shipped at 4°C. Store at +4°C short term (1-2 weeks). It is recommended to aliquot into single-use upon delivery. Store at -20°C long term.

Purity: Protein A affinity purified.

Hangzhou Huaan Biotechnology Co., Ltd.

Orders: 0086-571-88062880

Technical: 0086-571-89986345

Service mail: support@huabio.cn

 华安生物
HUABIO
www.huabio.cn

Applications: WB=Western blot IHC-P=Immunohistochemistry (paraffin) IF-Cell=Immunofluorescence (Cell) IF-Tissue=Immunofluorescence (Tissue) FC=Flow cytometry IP=Immunoprecipitation

Images

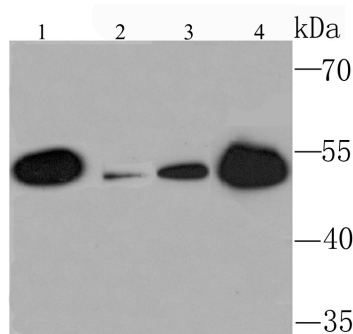


Fig1: Western blot analysis of KMT5A on different lysates using anti-KMT5A antibody at 1/1,000 dilution.

Positive control:

Lane 1: Mouse kidney tissue lysates

Lane 2: Mouse liver tissue lysates

Lane 3: 293T cell lysates

Lane 4: 293 cell lysates

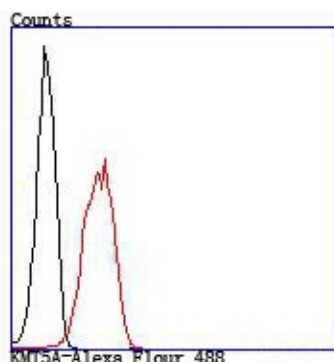


Fig2: Flow cytometric analysis of 293T cells with KMT5A antibody at 1/100 dilution (red) compared with an unlabelled control (cells without incubation with primary antibody; black).

Note: All products are "FOR RESEARCH USE ONLY AND ARE NOT INTENDED FOR DIAGNOSTIC OR THERAPEUTIC USE".

Background References

1. Gursoy-Yuzugullu O et al. Epigenetic therapy with inhibitors of histone methylation suppresses DNA damage signaling and increases glioma cell radiosensitivity. *Oncotarget* 8:24518-24532 (2017).
2. Zhou HR et al. Relationship between epigenetic changes in Wnt antagonists and acute leukemia. *Oncol Rep* 37:2663-2671 (2017).

Hangzhou Huaan Biotechnology Co., Ltd.

Orders:0086-571-88062880

Technical:0086-571-89986345

Service mail:support@huabio.cn

华安生物
HUABIO
www.huabio.cn

Applications:WB=Western blot IHC-P=Immunohistochemistry (paraffin) IF-Cell=Immunofluorescence (Cell) IF-Tissue=Immunofluorescence (Tissue) FC=Flow cytometry IP=Immunoprecipitation