

# Anti-CXCL12/SDF1 Antibody [JJ09-20]

ET1701-77



<b>Product Type:</b>	Recombinant Rabbit monoclonal IgG, primary antibodies
<b>Species reactivity:</b>	Human
<b>Applications:</b>	WB, IF-Cell, IF-Tissue, IHC-P
<b>Molecular Wt:</b>	Predicted band size: 11 kDa
<b>Clone number:</b>	JJ09-20

**Description:** The stromal cell derived factor 1 (SDF1, CXCL12) is a small, pro-inflammatory chemoattractant cytokine that regulates leukocyte trafficking through interactions with its cognate 7-transmembrane G protein-coupled receptors. The SDF1 receptor, CXCR4, also serves as a coreceptor for the entry of human immunodeficiency virus into target cells. SDF1 may regulate homing and maintenance of CXCR4-expressing stem or progenitor cells, including embryonic and many somatic stem cells. Many cancer cells express CXCR4, suggesting that SDF1 plays a role in cancer metastasis. Alternative splicing and differential processing during maturation produce a pair of SDF1 isoforms (SDF1 $\alpha$  and SDF1 $\beta$ ) that have different properties and biological activities. Additional isoforms of SDF1 have been reported.

**Immunogen:** Recombinant full length protein of human SDF1.

**Positive control:** Human kidney tissue.

**Subcellular location:** Secreted.

**Database links:** SwissProt: P48061 Human

**Recommended Dilutions:**

<b>WB</b>	1:1,000-1:2,000
<b>IF-Cell</b>	1:50-1:200
<b>IF-Tissue</b>	1:200
<b>IHC-P</b>	1:200

**Storage Buffer:** 1\*TBS (pH7.4), 0.05% BSA, 40% Glycerol. Preservative: 0.05% Sodium Azide.

**Storage Instruction:** Shipped at 4°C. Store at +4°C short term (1-2 weeks). It is recommended to aliquot into single-use upon delivery. Store at -20°C long term.

**Purity:** Protein A affinity purified.

Hangzhou Huaan Biotechnology Co., Ltd.

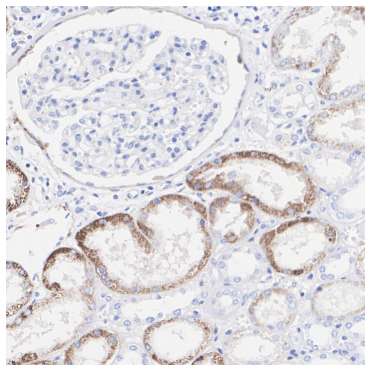
Orders:0086-571-88062880

Technical:0086-571-89986345

Service mail:support@huabio.cn

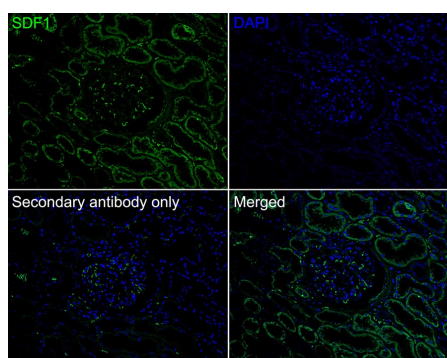
华安生物  
HUABIO  
www.huabio.cn

## Images



**Fig1:** Immunohistochemical analysis of paraffin-embedded human kidney tissue with Rabbit anti-CXCL12/SDF1 antibody (ET1701-77) at 1/200 dilution.

The section was pre-treated using heat mediated antigen retrieval with Tris-EDTA buffer (pH 9.0) for 20 minutes. The tissues were blocked in 1% BSA for 20 minutes at room temperature, washed with ddH<sub>2</sub>O and PBS, and then probed with the primary antibody (ET1701-77) at 1/200 dilution for 1 hour at room temperature. The detection was performed using an HRP conjugated compact polymer system. DAB was used as the chromogen. Tissues were counterstained with hematoxylin and mounted with DPX.



**Fig2:** Immunofluorescence analysis of paraffin-embedded human kidney tissue labeling CXCL12/SDF1 with Rabbit anti-CXCL12/SDF1 antibody (ET1701-77) at 1/200 dilution.

The section was pre-treated using heat mediated antigen retrieval with Tris-EDTA buffer (pH 9.0) for 20 minutes. The tissues were blocked in 10% negative goat serum for 1 hour at room temperature, washed with PBS, and then probed with the primary antibody (ET1701-77, green) at 1/200 dilution overnight at 4 °C, washed with PBS. Goat Anti-Rabbit IgG H&L (iFluor™ 488, HA1121) was used as the secondary antibody at 1/1,000 dilution. Nuclei were counterstained with DAPI (blue).

**Note:** All products are “FOR RESEARCH USE ONLY AND ARE NOT INTENDED FOR DIAGNOSTIC OR THERAPEUTIC USE”.

## Background References

1. Shi W et al. Transplantation of RADA16-BDNF peptide scaffold with human umbilical cord mesenchymal stem cells forced with CXCR4 and activated astrocytes for repair of traumatic brain injury. *Acta Biomater* 45:247-261 (2016).
2. Tanios F et al. CXCR4: A Potential Marker for Inflammatory Activity in Abdominal Aortic Aneurysm Wall. *Eur J Vasc Endovasc Surg* 50:745-53 (2015).

Hangzhou Huaan Biotechnology Co., Ltd.

Orders:0086-571-88062880

Technical:0086-571-89986345

Service mail:support@huabio.cn

华安生物  
HUABIO  
www.huabio.cn