

Anti-Raf1 Antibody [JJ086-06]

ET1701-21



Product Type:	Recombinant Rabbit monoclonal IgG, primary antibodies
Species reactivity:	Human, Mouse, Rat
Applications:	WB
Molecular Wt:	Predicted band size: 73 kDa
Clone number:	JJ086-06

Description: RAF proto-oncogene serine/threonine-protein kinase, also known as proto-oncogene c-RAF or simply c-Raf or even Raf-1, is an enzyme that in humans is encoded by the RAF1 gene. The c-Raf protein is part of the ERK1/2 pathway as a MAP kinase (MAP3K) that functions downstream of the Ras subfamily of membrane associated GTPases. C-Raf is a member of the Raf kinase family of serine/threonine-specific protein kinases, from the TKL (Tyrosine-kinase-like) group of kinases. Raf-1 is activated in response to activation of a variety of tyrosine kinase receptors as well as in response to pp60v-Src expression.

Immunogen: Synthetic peptide within human Raf1 aa 1-50/648.

Positive control: A375 cell lysate, HepG2 cell lysate, RAW264.7 cell lysate, NIH/3T3 cell lysate, PC-12 cell lysate, A549 cell lysate.

Subcellular location: Cytoplasm, Cell membrane, Mitochondrion, Nucleus.

Database links: SwissProt: P04049 Human | Q99N57 Mouse | P11345 Rat

Recommended Dilutions:

WB 1:1,000-1:2,000

Storage Buffer: 1*TBS (pH7.4), 0.05% BSA, 40% Glycerol. Preservative: 0.05% Sodium Azide.

Storage Instruction: Shipped at 4°C. Store at +4°C short term (1-2 weeks). It is recommended to aliquot into single-use upon delivery. Store at -20°C long term.

Purity: Protein A affinity purified.

Hangzhou Huaan Biotechnology Co., Ltd.

Orders:0086-571-88062880

Technical:0086-571-89986345

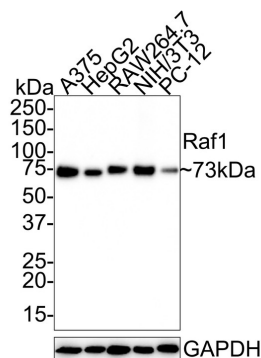
Service mail:support@huabio.cn

 华安生物
HUABIO
www.huabio.cn

Images

Fig1: Western blot analysis of Raf1 on different lysates with Rabbit anti-Raf1 antibody (ET1701-21) at 1/1,000 dilution.

Lane 1: A375 cell lysate
 Lane 2: HepG2 cell lysate
 Lane 3: RAW264.7 cell lysate
 Lane 4: NIH/3T3 cell lysate
 Lane 5: PC-12 cell lysate



Lysates/proteins at 20 µg/Lane.

Predicted band size: 73 kDa
 Observed band size: 73 kDa

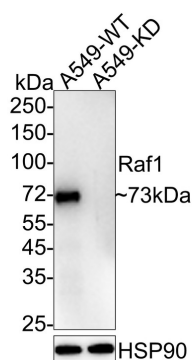
Exposure time: 1 minute;

4-20% SDS-PAGE gel.

Proteins were transferred to a PVDF membrane and blocked with 5% NFDN/TBST for 1 hour at room temperature. The primary antibody (ET1701-21) at 1/1,000 dilution was used in 5% NFDN/TBST at 4°C overnight. Goat Anti-Rabbit IgG - HRP Secondary Antibody (HA1001) at 1/50,000 dilution was used for 1 hour at room temperature.

Fig2: Western blot analysis of Raf1 on different lysates with Rabbit anti-Raf1 antibody (ET1701-21) at 1/1,000 dilution.

Lane 1: A549-WT cell lysate
 Lane 2: A549-KD Raf1 cell lysate



Lysates/proteins at 10 µg/Lane.

Predicted band size: 73 kDa
 Observed band size: 73 kDa

Exposure time: 1 minute; ECL: K1802;

4-20% SDS-PAGE gel.

Proteins were transferred to a PVDF membrane and blocked with 5% NFDN/TBST for 1 hour at room temperature. The primary antibody (ET1701-21) at 1/1,000 dilution was used in 2% NFDN/TBST at 4°C overnight. Goat Anti-Rabbit IgG - HRP Secondary Antibody (HA1001) at 1/50,000 dilution was used for 1 hour at room temperature.

Hangzhou Huaan Biotechnology Co., Ltd.

Orders:0086-571-88062880

Technical:0086-571-89986345

Service mail:support@huabio.cn

华安生物
 HUABIO
 www.huabio.cn

Note: All products are "FOR RESEARCH USE ONLY AND ARE NOT INTENDED FOR DIAGNOSTIC OR THERAPEUTIC USE".

Background References

1. Jang, ER. et al. 2015. Spatial control of Shoc2-scaffold-mediated ERK1/2 signaling requires remodeling activity of the ATPase PSMC5. *Journal of cell science.* 128: 4428-41.
2. Duncan, J.S. et al. 2012. Dynamic reprogramming of the kinome in response to targeted MEK inhibition in triple-negative breast cancer. *Cell.* 149: 307-21.

Hangzhou Huaan Biotechnology Co., Ltd.

Orders:0086-571-88062880

Technical:0086-571-89986345

Service mail:support@huabio.cn

 华安生物
HUAABIO
www.huabio.cn