

Anti-MMP-14 Antibody [SJ18-09]

ET1606-48



Product Type:	Recombinant Rabbit monoclonal IgG, primary antibodies
Species reactivity:	Human, Mouse, Rat
Applications:	WB, IF-Cell, IF-Tissue, IHC-P, IP
Molecular Wt:	Predicted band size: 66 kDa
Clone number:	SJ18-09

Description: The matrix metalloproteinases (MMP) are a family of peptidase enzymes responsible for the degradation of extracellular matrix components, including collagen, gelatin, fibronectin, laminin and proteoglycan. Transcription of MMP genes is differentially activated by phorbol ester, lipopolysaccharide (LPS) or staphylococcal enterotoxin B (SEB). MMP catalysis requires both calcium and zinc. Membrane-type matrix metalloproteinases, including MT-MMP-1 (also designated MMP-14), MT-MMP-2 (also designated MMP-15), MT-MMP-3 (also designated MMP-16) and MT-MMP-4 (also designated MMP-17) are type I membrane proteins that function to activate other MMPs. MT-MMP activation appears to be mediated by members of the proprotein convertase family, suggesting that a proprotein convertase/MT-MMP/MMP cascade may be involved in the regulation of ECM turnover.

Immunogen: Synthetic peptide within Human MMP14 aa 149-200 / 582.

Positive control: Human kidney tissue lysates, CRC, BT-20, human breast carcinoma tissue, human kidney tissue, human uterus tissue.

Subcellular location: Membrane, Melanosome, Cytoplasm.

Database links: SwissProt: P50281 Human | P53690 Mouse | Q10739 Rat

Recommended Dilutions:

WB	1:500-1:2,000
IF-Cell	1:50-1:200
IF-Tissue	1:50-1:2000
IHC-P	1:50-1:10,000
IP	Use at an assay dependent concentration.

Storage Buffer: 1*TBS (pH7.4), 0.05% BSA, 40% Glycerol. Preservative: 0.05% Sodium Azide.

Storage Instruction: Shipped at 4°C. Store at +4°C short term (1-2 weeks). It is recommended to aliquot into single-use upon delivery. Store at -20°C long term.

Purity: Protein A affinity purified.

Hangzhou Huaan Biotechnology Co., Ltd.

Orders:0086-571-88062880

Technical:0086-571-89986345

Service mail:support@huabio.cn

华安生物
HUABIO
www.huabio.cn

Images

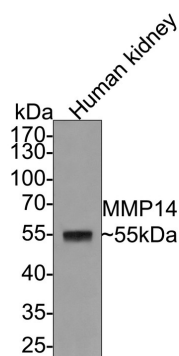


Fig1: Western blot analysis of MMP-14 on human kidney tissue lysates with Rabbit anti-MMP-14 antibody (ET1606-48) at 1/1,000 dilution.

Lysates/proteins at 20 µg/Lane.

Predicted band size: 66 kDa

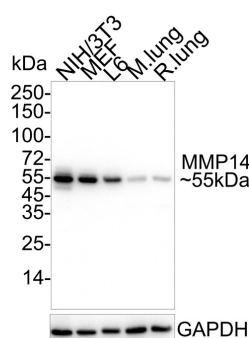
Observed band size: 55 kDa

Exposure time: 2 minutes;

10% SDS-PAGE gel.

Proteins were transferred to a PVDF membrane and blocked with 5% NFDM/TBST for 1 hour at room temperature. The primary antibody (ET1606-48) at 1/1,000 dilution was used in 5% NFDM/TBST at room temperature for 2 hours. Goat Anti-Rabbit IgG - HRP Secondary Antibody (HA1001) at 1:300,000 dilution was used for 1 hour at room temperature.

Fig2: Western blot analysis of MMP-14 on different lysates with Rabbit anti-MMP-14 antibody (ET1606-48) at 1/1,000 dilution.



Lane 1: NIH/3T3 cell lysate

Lane 2: MEF cell lysate

Lane 3: L6 cell lysate

Lane 4: Mouse lung tissue lysate

Lane 5: Rat lung tissue lysate

Lysates/proteins at 20/40 µg/Lane.

Predicted band size: 66 kDa

Observed band size: 55 kDa

Exposure time: 10 seconds;

4-20% SDS-PAGE gel.

Proteins were transferred to a PVDF membrane and blocked with 5% NFDM/TBST for 1 hour at room temperature. The primary antibody (ET1606-48) at 1/1,000 dilution was used in 5% NFDM/TBST at 4°C overnight. Goat Anti-Rabbit IgG - HRP Secondary Antibody (HA1001) at 1/50,000 dilution was used for 1 hour at room temperature.

Hangzhou Huaan Biotechnology Co., Ltd.

Orders:0086-571-88062880

Technical:0086-571-89986345

Service mail:support@huabio.cn

华安生物
HUABIO
www.huabio.cn

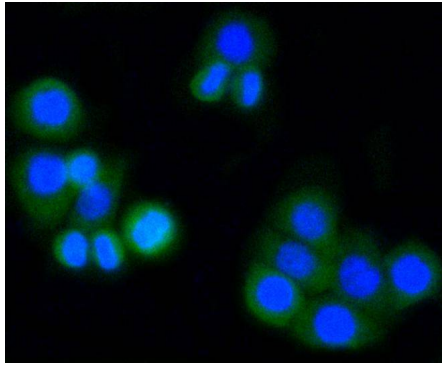


Fig3: ICC staining of MMP-14 in CRC cells (green). Formalin fixed cells were permeabilized with 0.1% Triton X-100 in TBS for 10 minutes at room temperature and blocked with 1% Blocker BSA for 15 minutes at room temperature. Cells were probed with the primary antibody (ET1606-48, 1/50) for 1 hour at room temperature, washed with PBS. Alexa Fluor®488 Goat anti-Rabbit IgG was used as the secondary antibody at 1/1,000 dilution. The nuclear counter stain is DAPI (blue).

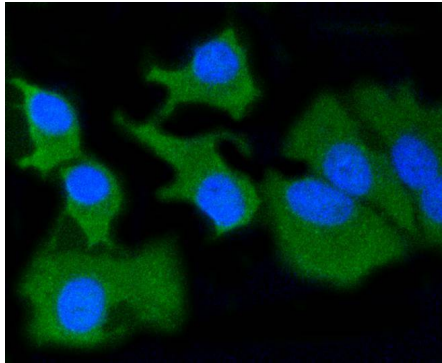


Fig4: ICC staining of MMP-14 in BT-20 cells (green). Formalin fixed cells were permeabilized with 0.1% Triton X-100 in TBS for 10 minutes at room temperature and blocked with 1% Blocker BSA for 15 minutes at room temperature. Cells were probed with the primary antibody (ET1606-48, 1/50) for 1 hour at room temperature, washed with PBS. Alexa Fluor®488 Goat anti-Rabbit IgG was used as the secondary antibody at 1/1,000 dilution. The nuclear counter stain is DAPI (blue).

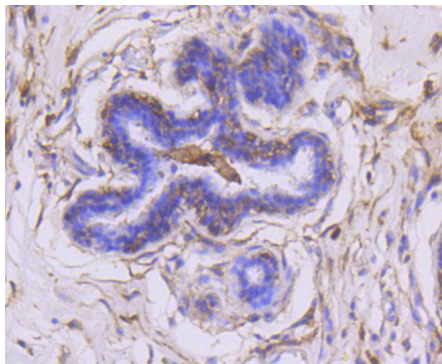


Fig5: Immunohistochemical analysis of paraffin-embedded human breast carcinoma tissue using anti-MMP-14 antibody. The section was pre-treated using heat mediated antigen retrieval with Tris-EDTA buffer (pH 8.0-8.4) for 20 minutes. The tissues were blocked in 5% BSA for 30 minutes at room temperature, washed with ddH₂O and PBS, and then probed with the primary antibody (ET1606-48, 1/50) for 30 minutes at room temperature. The detection was performed using an HRP conjugated compact polymer system. DAB was used as the chromogen. Tissues were counterstained with hematoxylin and mounted with DPX.

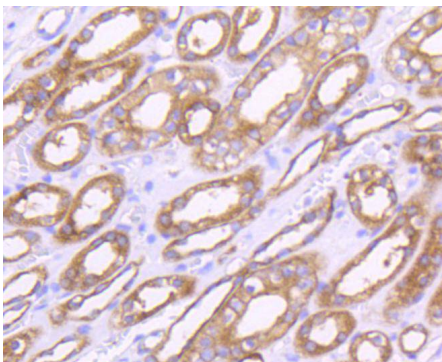


Fig6: Immunohistochemical analysis of paraffin-embedded human kidney tissue using anti-MMP-14 antibody. The section was pre-treated using heat mediated antigen retrieval with Tris-EDTA buffer (pH 8.0-8.4) for 20 minutes. The tissues were blocked in 5% BSA for 30 minutes at room temperature, washed with ddH₂O and PBS, and then probed with the primary antibody (ET1606-48, 1/50) for 30 minutes at room temperature. The detection was performed using an HRP conjugated compact polymer system. DAB was used as the chromogen. Tissues were counterstained with hematoxylin and mounted with DPX.

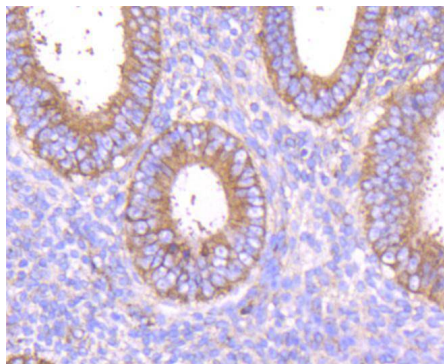


Fig7: Immunohistochemical analysis of paraffin-embedded human uterus tissue using anti-MMP-14 antibody. The section was pre-treated using heat mediated antigen retrieval with Tris-EDTA buffer (pH 8.0-8.4) for 20 minutes. The tissues were blocked in 5% BSA for 30 minutes at room temperature, washed with ddH₂O and PBS, and then probed with the primary antibody (ET1606-48, 1/50) for 30 minutes at room temperature. The detection was performed using an HRP conjugated compact polymer system. DAB was used as the chromogen. Tissues were counterstained with hematoxylin and mounted with DPX.

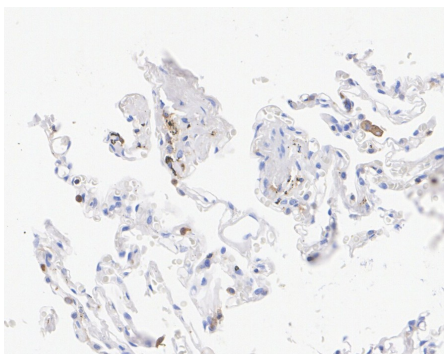


Fig8: Immunohistochemical analysis of paraffin-embedded human lung tissue with Rabbit anti-MMP-14 antibody (ET1606-48) at 1/10,000 dilution.

The section was pre-treated using heat mediated antigen retrieval with Tris-EDTA buffer (pH 9.0) for 20 minutes. The tissues were blocked in 1% BSA for 20 minutes at room temperature, washed with ddH₂O and PBS, and then probed with the primary antibody (ET1606-48) at 1/10,000 dilution for 1 hour at room temperature. The detection was performed using an HRP conjugated compact polymer system. DAB was used as the chromogen. Tissues were counterstained with hematoxylin and mounted with DPX.

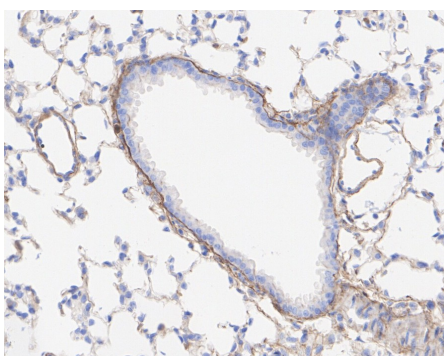


Fig9: Immunohistochemical analysis of paraffin-embedded mouse lung tissue with Rabbit anti-MMP-14 antibody (ET1606-48) at 1/10,000 dilution.

The section was pre-treated using heat mediated antigen retrieval with Tris-EDTA buffer (pH 9.0) for 20 minutes. The tissues were blocked in 1% BSA for 20 minutes at room temperature, washed with ddH₂O and PBS, and then probed with the primary antibody (ET1606-48) at 1/10,000 dilution for 1 hour at room temperature. The detection was performed using an HRP conjugated compact polymer system. DAB was used as the chromogen. Tissues were counterstained with hematoxylin and mounted with DPX.

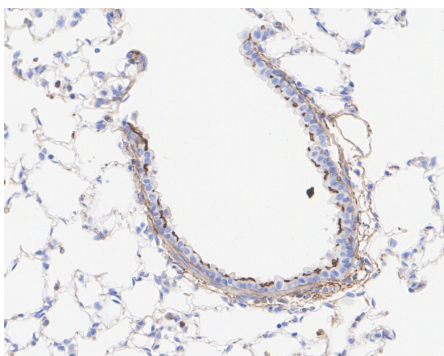


Fig10: Immunohistochemical analysis of paraffin-embedded rat lung tissue with Rabbit anti-MMP-14 antibody (ET1606-48) at 1/10,000 dilution.

The section was pre-treated using heat mediated antigen retrieval with Tris-EDTA buffer (pH 9.0) for 20 minutes. The tissues were blocked in 1% BSA for 20 minutes at room temperature, washed with ddH₂O and PBS, and then probed with the primary antibody (ET1606-48) at 1/10,000 dilution for 1 hour at room temperature. The detection was performed using an HRP conjugated compact polymer system. DAB was used as the chromogen. Tissues were counterstained with hematoxylin and mounted with DPX.

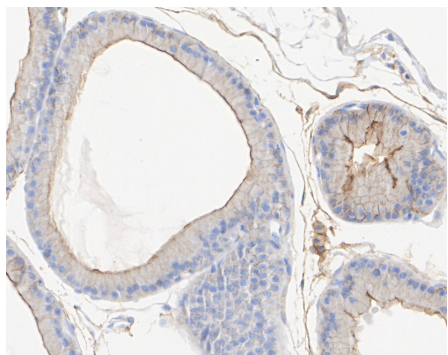


Fig11: Immunohistochemical analysis of paraffin-embedded rat prostate tissue with Rabbit anti-MMP-14 antibody (ET1606-48) at 1/10,000 dilution.

The section was pre-treated using heat mediated antigen retrieval with Tris-EDTA buffer (pH 9.0) for 20 minutes. The tissues were blocked in 1% BSA for 20 minutes at room temperature, washed with ddH₂O and PBS, and then probed with the primary antibody (ET1606-48) at 1/10,000 dilution for 1 hour at room temperature. The detection was performed using an HRP conjugated compact polymer system. DAB was used as the chromogen. Tissues were counterstained with hematoxylin and mounted with DPX.

Note: All products are "FOR RESEARCH USE ONLY AND ARE NOT INTENDED FOR DIAGNOSTIC OR THERAPEUTIC USE".

Background References

1. Welch-Reardon KM et al. Angiogenic sprouting is regulated by endothelial cell expression of Slug. *J Cell Sci* 127:2017-28 (2014).
2. Gu Z et al. Soft matrix is a natural stimulator for cellular invasiveness. *Mol Biol Cell* 25:457-69 (2014).

Hangzhou Huaan Biotechnology Co., Ltd.

Orders:0086-571-88062880

Technical:0086-571-89986345

Service mail:support@huabio.cn

华安生物
HUABIO
www.huabio.cn