

Anti-AFP Antibody

ER80601



Product Type:	Rabbit polyclonal IgG, primary antibodies
Species reactivity:	Human
Applications:	WB, IF-Cell, IHC-P, FC
Molecular Wt:	70 kDa

Description: AFP is a protein normally produced by the fetal liver and is present in the fluid surrounding the fetus (amniotic fluid), and crosses the placenta into the mother's blood. AFP gene expression is regulated by the interactions between steroid hormone receptors and transcriptional factors in separate signal transduction pathways. AFP functions as a binding and transporting ligand and cell growth regulator. Elevated expression level of AFP has been implicated in colorectal, ovarian, pancreatic, testicular, and certain liver cancers. High levels of AFP are also seen in some diseases such as hepatitis and colitis.

Immunogen: Synthetic peptide within C-terminal human AFP.

Positive control: NCCIT, HepG2, Jurkat, human liver tissue, human lung tissue, human liver cancer tissue.

Subcellular location: Secreted

Database links: SwissProt: P02771 Human

Recommended Dilutions:

WB	1:1,000-1:2,000
IF-Cell	1:200
IHC-P	1:200
FC	1:100-1:200

Storage Buffer: 1*PBS (pH7.4), 0.2% BSA, 40% Glycerol. Preservative: 0.05% Sodium Azide.

Storage Instruction: Store at +4°C after thawing. Aliquot store at -20°C or -80°C. Avoid repeated freeze / thaw cycles.

Purity: Immunogen affinity purified.

Hangzhou Huaan Biotechnology Co., Ltd.

Orders:0086-571-88062880

Technical:0086-571-89986345

Service mail:support@huabio.cn

 华安生物
HUABIO
www.huabio.cn

Images

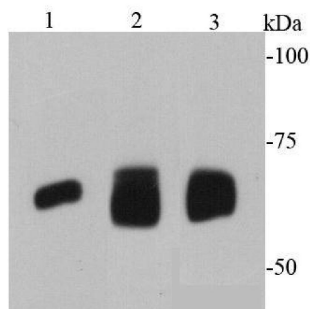


Fig1: Western blot analysis of AFP on different cell lysates using anti-AFP antibody at 1/1000 dilution.

Positive control:

Lane 1: HepG2

Lane 2: human lung

Lane 3: human liver

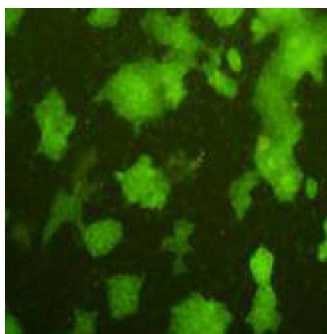


Fig2: ICC staining AFP in NCCIT cells (green). Cells were fixed in paraformaldehyde, permeabilised with 0.25% Triton X100/PBS.

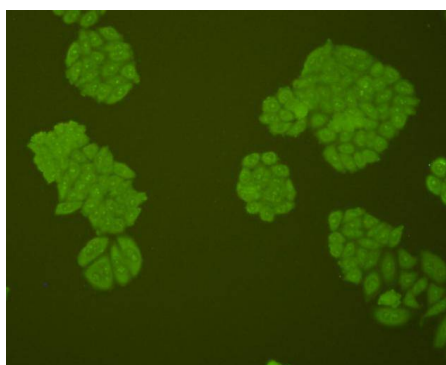


Fig3: ICC staining AFP in HepG2 cells (green). Cells were fixed in paraformaldehyde, permeabilised with 0.25% Triton X100/PBS.

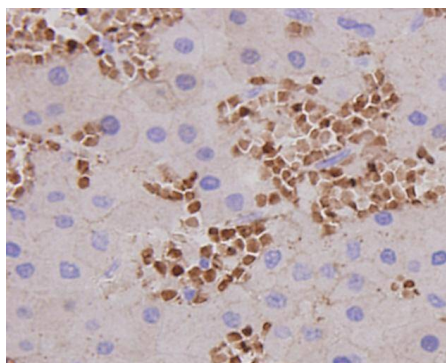


Fig4: Immunohistochemical analysis of paraffin-embedded human liver cancer tissue using anti-AFP antibody. Counter stained with hematoxylin.

Hangzhou Huaan Biotechnology Co., Ltd.

Orders:0086-571-88062880

Technical:0086-571-89986345

Service mail:support@huabio.cn

华安生物
HUABIO
www.huabio.cn

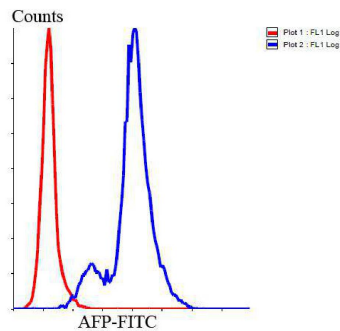


Fig5: Flow cytometric analysis of Jurkat cells with AFP antibody at 1/100 dilution (blue) compared with an unlabelled control (cells without incubation with primary antibody; red). Goat anti rabbit IgG (FITC) was used as the secondary antibody.

Note: All products are “FOR RESEARCH USE ONLY AND ARE NOT INTENDED FOR DIAGNOSTIC OR THERAPEUTIC USE”.

Background References

1. Shan, L. et al. 2012. Proteomic analysis of amniotic fluid of pregnant rats with spina bifida aperta. *J Proteomics*. 75: 1181-1189.
2. Soma, M. et al. 2012. Preferential emergence of cell types expressing markers for primitive endoderm lineages in mouse embryonic stem cells expressing exogenous EGAM1 homeoprotein. *J. Biosci. Bioeng*. 114: 342-346.

Hangzhou Huan Biotechnology Co., Ltd.

Orders:0086-571-88062880

Technical:0086-571-89986345

Service mail:support@huabio.cn

华安生物
HUABIO
www.huabio.cn