

# Anti-TM4SF19 Antibody

## ER65951



**Product Type:** Rabbit polyclonal IgG, primary antibodies

**Species reactivity:** Human, Mouse, Rat

**Applications:** WB

**Molecular Wt:** 24 kDa

**Description:** Belongs to the L6 tetraspanin family.

**Immunogen:** Synthesized peptide derived from human TM4SF19

**Positive control:** Skin,

**Database links:** SwissProt: Q96DZ7 Human

**Recommended Dilutions:**

**WB** 1:500-1:2000

**Storage Buffer:** Liquid in PBS containing 50% glycerol, 0.5% BSA and 0.02% sodium azide.

**Storage Instruction:** Store at +4°C after thawing. Aliquot store at -20°C or -80°C. Avoid repeated freeze / thaw cycles.

**Purity:** Immunogen affinity purified.

Hangzhou HuaAn Biotechnology Co.,Ltd.

Orders: 0086-571-88062880

Technical: 0086-571-89986345

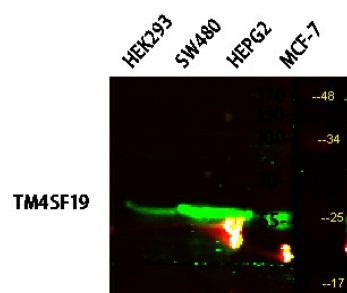
Service mail: support@huabio.cn

www.huabio.cn



Applications: WB=Western blot IP=Immunoprecipitation IHC=Immunohistochemistry IF=Immunofluorescence FC=Flow cytometry

## Images



**Fig1:** Western blot analysis of various lysates, primary antibody was diluted at 1:1000, 4° over night, secondary antibody(cat: RS23920)was diluted at 1:10000, 37° 1hour.

**Note:** All products are "FOR RESEARCH USE ONLY AND ARE NOT INTENDED FOR DIAGNOSTIC OR THERAPEUTIC USE".