

Anti-APLF Antibody

ER65866



Product Type:	Rabbit polyclonal IgG, primary antibodies
Species reactivity:	Human, Mouse, Rat
Applications:	WB
Molecular Wt:	60 kDa

Description: C2ORF13 is a component of the cellular response to chromosomal DNA single- and double-strand breaks (Iles et al. 2007)

Immunogen: Synthesized peptide derived from human APLF Polyclonal

Positive control: Testis,

Database links: SwissProt: Q8IW19 Human

Recommended Dilutions:
WB 1:500-1:2000

Storage Buffer: Liquid in PBS containing 50% glycerol, 0.5% BSA and 0.02% sodium azide.

Storage Instruction: Store at +4°C after thawing. Aliquot store at -20°C or -80°C. Avoid repeated freeze / thaw cycles.

Purity: Immunogen affinity purified.

Hangzhou HuaAn Biotechnology Co.,Ltd.

Orders: 0086-571-88062880

Technical:0086-571-89986345

Service mail: support@huabio.cn

www.huabio.cn



Images

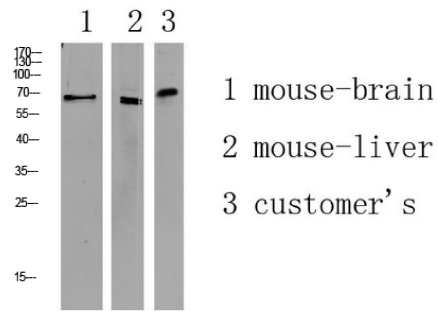


Fig1: Western blot analysis of mouse brain and mouse liver tissue lysate, primary antibody was diluted at 1,000. Secondary antibody(catalog#:HA1001) was diluted at 1:20,000.

Note: All products are "FOR RESEARCH USE ONLY AND ARE NOT INTENDED FOR DIAGNOSTIC OR THERAPEUTIC USE".