

Anti-CCL20/MIP-3 alpha Antibody

ER65786



Product Type:	Rabbit polyclonal IgG, primary antibodies
Species reactivity:	Human
Applications:	IHC-P, IF-Cell, FC
Molecular Wt:	Predicted band size: 11 kDa

Description: Chemokine (C-C motif) ligand 20 (CCL20) or liver activation regulated chemokine (LARC) or Macrophage Inflammatory Protein-3 (MIP3A) is a small cytokine belonging to the CC chemokine family. It is strongly chemotactic for lymphocytes and weakly attracts neutrophils. CCL20 is implicated in the formation and function of mucosal lymphoid tissues via chemoattraction of lymphocytes and dendritic cells towards the epithelial cells surrounding these tissues. CCL20 elicits its effects on its target cells by binding and activating the chemokine receptor CCR6. Gene expression of CCL20 can be induced by microbial factors such as lipopolysaccharide (LPS), and inflammatory cytokines such as tumor necrosis factor and interferon- γ , and down-regulated by IL-10. CCL20 is expressed in several tissues with highest expression observed in peripheral blood lymphocytes, lymph nodes, liver, appendix, and fetal lung and lower levels in thymus, testis, prostate and gut. The gene for CCL20 (scya20) is located on chromosome 2 in humans.

Immunogen: Recombinant protein within human CCL20/MIP-3 alpha aa 1-96.

Positive control: Human liver tissue, THP-1.

Subcellular location: Secreted.

Database links: SwissProt: P78556 Human

Recommended Dilutions:

IHC-P	1:500
IF-Cell	1:500
FC	1:1,000

Storage Buffer: PBS (pH7.4), 0.1% BSA, 40% Glycerol. Preservative: 0.05% Sodium Azide.

Storage Instruction: Shipped at 4°C. Store at +4°C short term (1-2 weeks). It is recommended to aliquot into single-use upon delivery. Store at -20°C long term.

Purity: Immunogen affinity purified.

Hangzhou Huaan Biotechnology Co., Ltd.

Orders:0086-571-88062880

Technical:0086-571-89986345

Service mail:support@huabio.cn

 华安生物
HUABIO
www.huabio.cn

Images

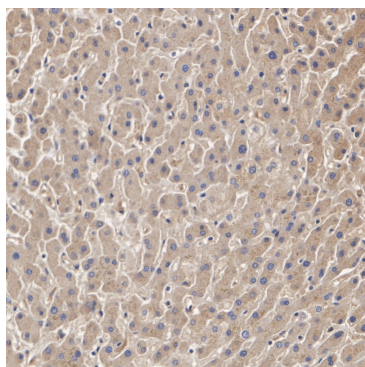
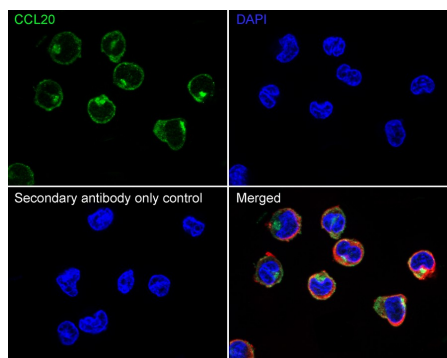


Fig1: Immunohistochemical analysis of paraffin-embedded human liver tissue with Rabbit anti-CCL20/MIP-3 alpha antibody (ER65786) at 1/500 dilution.

The section was pre-treated using heat mediated antigen retrieval with Tris-EDTA buffer (pH 9.0) for 20 minutes. The tissues were blocked in 1% BSA for 20 minutes at room temperature, washed with ddH₂O and PBS, and then probed with the primary antibody (ER65786) at 1/500 dilution for 1 hour at room temperature. The detection was performed using an HRP conjugated compact polymer system. DAB was used as the chromogen. Tissues were counterstained with hematoxylin and mounted with DPX.

Fig2: Immunocytochemistry analysis of THP-1 cells labeling CCL20/MIP-3 alpha with Rabbit anti-CCL20/MIP-3 alpha antibody (ER65786) at 1/500 dilution.



Cells were fixed in 4% paraformaldehyde for 15 minutes at room temperature, permeabilized with 0.1% Triton X-100 in PBS for 15 minutes at room temperature, then blocked with 1% BSA in 10% negative goat serum for 1 hour at room temperature. Cells were then incubated with Rabbit anti-CCL20/MIP-3 alpha antibody (ER65786) at 1/500 dilution in 1% BSA in PBST overnight at 4 °C. Goat Anti-Rabbit IgG H&L (iFluor™ 488, HA1121) was used as the secondary antibody at 1/1,000 dilution. PBS instead of the primary antibody was used as the secondary antibody only control. Nuclear DNA was labelled in blue with DAPI.

Beta tubulin (HA601187, red) was stained at 1/100 dilution overnight at +4 °C. Goat Anti-Mouse IgG H&L (iFluor™ 594, HA1126) was used as the secondary antibody at 1/1,000 dilution.

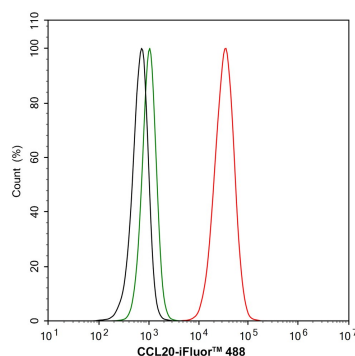


Fig3: Flow cytometric analysis of THP-1 cells labeling CCL20/MIP-3 alpha.

Cells were fixed and permeabilized. Then stained with the primary antibody (ER65786, 1/1,000) (red) compared with Rabbit IgG Isotype Control (green). After incubation of the primary antibody at +4 °C for an hour, the cells were stained with a iFluor™ 488 conjugate-Goat anti-Rabbit IgG Secondary antibody (HA1121) at 1/1,000 dilution for 30 minutes at +4 °C. Unlabelled sample was used as a control (cells without incubation with primary antibody; black).

Hangzhou Huan Biotechnology Co., Ltd.

Orders:0086-571-88062880

Technical:0086-571-89986345

Service mail:support@huabio.cn

华安生物
HUABIO
www.huabio.cn

Note: All products are "FOR RESEARCH USE ONLY AND ARE NOT INTENDED FOR DIAGNOSTIC OR THERAPEUTIC USE".

Background References

1. Kadomoto S et al. The CCL20-CCR6 Axis in Cancer Progression. *Int J Mol Sci.* 2020 Jul
2. Meitei HT et al. CCR6-CCL20 axis as a therapeutic target for autoimmune diseases. *Autoimmun Rev.* 2021 Jul

Hangzhou Huaan Biotechnology Co., Ltd.

Orders:0086-571-88062880

Technical:0086-571-89986345

Service mail:support@huabio.cn

 华安生物
HUAABIO
www.huabio.cn