

# Anti-CD300e Antibody

ER65772



**Product Type:** Rabbit polyclonal IgG, primary antibodies  
**Species reactivity:** Human  
**Applications:** IHC-P

**Description:** This gene encodes a member of the CD300 glycoprotein family of cell surface proteins expressed on myeloid cells. The protein interacts with the TYRO protein tyrosine kinase-binding protein and is thought to act as an activating receptor.

**Immunogen:** Synthetic peptide from human protein at AA range: 31-80

**Positive control:** Lung, Peripheral blood monocyte,

**Database links:** SwissProt: Q496F6 Human

**Recommended Dilutions:**  
IHC-P 1:50-200

**Storage Buffer:** Liquid in PBS containing 50% glycerol, 0.5% BSA and 0.02% sodium azide.

**Storage Instruction:** Store at +4°C after thawing. Aliquot store at -20°C or -80°C. Avoid repeated freeze / thaw cycles.

**Purity:** Immunogen affinity purified.

Hangzhou HuaAn Biotechnology Co.,Ltd.

Orders: 0086-571-88062880

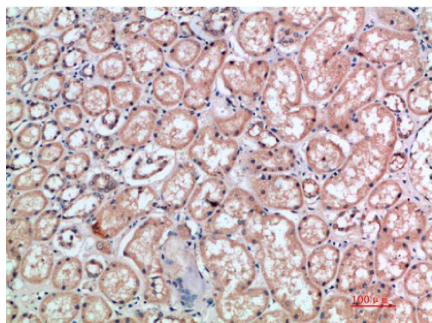
Technical:0086-571-89986345

Service mail: support@huabio.cn

www.huabio.cn



## Images



**Fig1:** Immunohistochemical analysis of paraffin-embedded human-kidney, antibody was diluted at 1:200

---

**Note:** All products are “FOR RESEARCH USE ONLY AND ARE NOT INTENDED FOR DIAGNOSTIC OR THERAPEUTIC USE”.

---