

Anti-GMFB Antibody

ER65606



Product Type:	Rabbit polyclonal IgG, primary antibodies
Species reactivity:	Human, Mouse, Rat
Applications:	WB, IHC-P
Molecular Wt:	17 kDa

Description: This protein causes differentiation of brain cells, stimulation of neural regeneration, and inhibition of proliferation of tumor cells. PTM:Phosphorylated; stimulated by phorbol ester. Belongs to the actin-binding proteins ADF family. GMF subfamily. Contains 1 ADF-H domain.

Immunogen: The antiserum was produced against synthesized peptide derived from the Internal region of human GMFB. AA range: 1-50

Positive control: Bladder, Brain,

Database links: SwissProt: P60983 Human

Recommended Dilutions:

WB	1:500-1:2000
IHC-P	1:100-1:300

Storage Buffer: Liquid in PBS containing 50% glycerol, 0.5% BSA and 0.02% sodium azide.

Storage Instruction: Store at +4°C after thawing. Aliquot store at -20°C or -80°C. Avoid repeated freeze / thaw cycles.

Purity: Immunogen affinity purified.

Hangzhou HuaAn Biotechnology Co.,Ltd.

Orders: 0086-571-88062880

Technical:0086-571-89986345

Service mail: support@huabio.cn

www.huabio.cn



Images

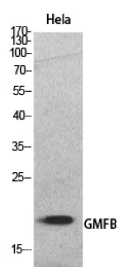


Fig1: Western Blot analysis of HeLa cells using GMF- β Polyclonal Antibody.. Secondary antibody (catalog#: HA1001) was diluted at 1:20000

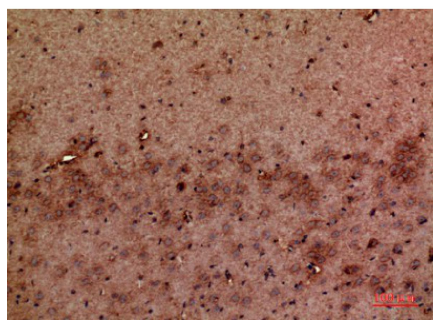


Fig2: Immunohistochemical analysis of paraffin-embedded mouse-brain, antibody was diluted at 1:100

Note: All products are "FOR RESEARCH USE ONLY AND ARE NOT INTENDED FOR DIAGNOSTIC OR THERAPEUTIC USE".



Hangzhou HuaAn Biotechnology Co.,Ltd.

Orders: 0086-571-88062880

Technical:0086-571-89986345

Service mail: support@huabio.cn

www.huabio.cn

Applications: WB=Western blot IP=Immunoprecipitation IHC=Immunohistochemistry IF=Immunofluorescence FC=Flow cytometry