

Anti-FGF-16 Antibody

ER65578



Product Type:	Rabbit polyclonal IgG, primary antibodies
Species reactivity:	Human, Mouse, Rat
Applications:	WB, IHC-P
Molecular Wt:	24 kDa

Description: This gene encodes a member of a family of proteins that are involved in a variety of biological processes, including embryonic development, cell growth, morphogenesis, tissue repair, tumor growth and invasion. This gene is expressed in cardiac cells and is required for proper heart development. Mutation in this gene was also observed in individuals with metacarpal 4-5 fusion.

Immunogen: The antiserum was produced against synthesized peptide derived from the Internal region of human FGF16. AA range:141-190

Positive control: Heart,

Database links: SwissProt: O43320 Human

Recommended Dilutions:

WB	1:500-1:2000
IHC-P	1:100-1:300

Storage Buffer: Liquid in PBS containing 50% glycerol, 0.5% BSA and 0.02% sodium azide.

Storage Instruction: Store at +4°C after thawing. Aliquot store at -20°C or -80°C. Avoid repeated freeze / thaw cycles.

Purity: Immunogen affinity purified.

Hangzhou Huaan Biotechnology Co., Ltd.

Orders:0086-571-88062880

Technical:0086-571-89986345

Service mail:support@huabio.cn

 华安生物
HUABIO
www.huabio.cn

Images

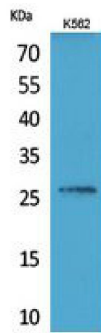


Fig1: Western Blot analysis of K562 cells using FGF-16 Polyclonal Antibody.. Secondary antibody (catalog#: HA1001) was diluted at 1:20000

Note: All products are "FOR RESEARCH USE ONLY AND ARE NOT INTENDED FOR DIAGNOSTIC OR THERAPEUTIC USE".

Hangzhou Huaan Biotechnology Co., Ltd.

Orders:0086-571-88062880

Technical:0086-571-89986345

Service mail:support@huabio.cn

华安生物
HUABIO
www.huabio.cn