

Anti-GDF-9 Antibody

ER65539



Product Type:	Rabbit polyclonal IgG, primary antibodies
Species reactivity:	Human, Mouse, Rat
Applications:	WB
Molecular Wt:	51 kDa

Description: This gene encodes a secreted ligand of the TGF-beta (transforming growth factor-beta) superfamily of proteins. Ligands of this family bind various TGF-beta receptors leading to recruitment and activation of SMAD family transcription factors that regulate gene expression. The encoded preproprotein is proteolytically processed to generate each subunit of the disulfide-linked homodimer. This protein regulates ovarian function. Reduced expression of this gene may be associated with polycystic ovary syndrome and mutations in this gene may be more common in mothers of dizygotic twins.

Immunogen: The antiserum was produced against synthesized peptide derived from the C-terminal region of human GDF9. AA range:405-454

Database links: SwissProt: O60383 Human

Recommended Dilutions:
WB 1:500-1:2000

Storage Buffer: Liquid in PBS containing 50% glycerol, 0.5% BSA and 0.02% sodium azide.

Storage Instruction: Store at +4°C after thawing. Aliquot store at -20°C or -80°C. Avoid repeated freeze / thaw cycles.

Purity: Immunogen affinity purified.



Hangzhou HuaAn Biotechnology Co.,Ltd.

Orders: 0086-571-88062880

Technical:0086-571-89986345

Service mail: support@huabio.cn

www.huabio.cn

Applications: WB=Western blot IP=Immunoprecipitation IHC=Immunohistochemistry IF=Immunofluorescence FC=Flow cytometry

Images

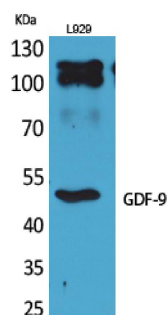


Fig1: Western Blot analysis of L929 cells using GDF-9 Polyclonal Antibody. Antibody was diluted at 1:1000. Secondary antibody (catalog#: HA1001) was diluted at 1:20000

Note: All products are "FOR RESEARCH USE ONLY AND ARE NOT INTENDED FOR DIAGNOSTIC OR THERAPEUTIC USE".