

# Anti-CXCL13 Antibody

## ER65489



<b>Product Type:</b>	Rabbit polyclonal IgG, primary antibodies
<b>Species reactivity:</b>	Human
<b>Applications:</b>	WB
<b>Molecular Wt:</b>	Predicted band size: 13 kDa

**Description:** Chemokine (C-X-C motif) ligand 13 (CXCL13), also known as B lymphocyte chemoattractant (BLC) or B cell-attracting chemokine 1 (BCA-1), is a protein ligand that in humans is encoded by the CXCL13 gene. CXCL13 is a small chemokine belonging to the CXC chemokine family. As its other names suggest, this chemokine is selectively chemotactic for B cells belonging to both the B-1 and B-2 subsets, and elicits its effects by interacting with chemokine receptor CXCR5. CXCL13 and its receptor CXCR5 control the organization of B cells within follicles of lymphoid tissues and is expressed highly in the liver, spleen, lymph nodes, and gut of humans. The gene for CXCL13 is located on human chromosome 4 in a cluster of other CXC chemokines. In T lymphocytes, CXCL13 expression is thought to reflect a germinal center origin of the T cell, particularly a subset of T cells called follicular B helper T cells (or TFH cells). Hence, expression of CXCL13 in T-cell lymphomas, such as angioimmunoblastic T-cell lymphoma, is thought to reflect a germinal center origin of the neoplastic T-cells.

**Immunogen:** Recombinant protein within human CXCL13 aa 1-109 / 109.

**Subcellular location:** Secreted.

**Database links:** SwissProt: O43927 Human

**Recommended Dilutions:**

**WB** 1:2,000

**Storage Buffer:** PBS (pH7.4), 0.1% BSA, 40% Glycerol. Preservative: 0.05% Sodium Azide.

**Storage Instruction:** Shipped at 4°C. Store at +4°C short term (1-2 weeks). It is recommended to aliquot into single-use upon delivery. Store at -20°C long term.

**Purity:** Immunogen affinity purified.

Hangzhou Huaan Biotechnology Co., Ltd.

Orders:0086-571-88062880

Technical:0086-571-89986345

Service mail:support@huabio.cn

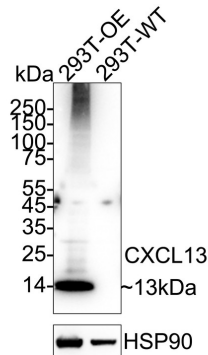
 华安生物  
HUABIO  
www.huabio.cn

## Images

**Fig1:** Western blot analysis of CXCL13 on different lysates with Rabbit anti-CXCL13 antibody (ER65489) at 1/2,000 dilution.

Lane 1: 293T-OE-CXCL13 cell lysate

Lane 2: 293T cell lysate



Lysates/proteins at 20 µg/Lane.

Predicted band size: 13 kDa

Observed band size: 13 kDa

Exposure time: 6 seconds; ECL: K1801;

4-20% SDS-PAGE gel.

Proteins were transferred to a PVDF membrane and blocked with 5% NFDM/TBST for 1 hour at room temperature. The primary antibody (ER65489) at 1/2,000 dilution was used in 5% NFDM/TBST at 4°C overnight. Goat Anti-Rabbit IgG - HRP Secondary Antibody (HA1001) at 1/50,000 dilution was used for 1 hour at room temperature.

**Note:** All products are "FOR RESEARCH USE ONLY AND ARE NOT INTENDED FOR DIAGNOSTIC OR THERAPEUTIC USE".

## Background References

1. Liu B et al. Single-cell meta-analyses reveal responses of tumor-reactive CXCL13+ T cells to immune-checkpoint blockade. Nat Cancer. 2022 Sep
2. Pan Z et al. Role of the CXCL13/CXCR5 Axis in Autoimmune Diseases. Front Immunol. 2022 Mar

Hangzhou Huaan Biotechnology Co., Ltd.

Orders:0086-571-88062880

Technical:0086-571-89986345

Service mail:support@huabio.cn

华安生物  
HUABIO  
www.huabio.cn