

Anti-SLC6A14 Antibody

ER65445



Product Type:	Rabbit polyclonal IgG, primary antibodies
Species reactivity:	Human
Applications:	WB, IHC-P
Molecular Wt:	72 kDa

Description: This gene encodes a member of the solute carrier family 6. Members of this family are sodium and chloride dependent neurotransmitter transporters. The encoded protein transports both neutral and cationic amino acids. This protein may also function as a beta-alanine carrier. Mutations in this gene may be associated with Xlinked obesity. A pseudogene of this gene is found on chromosome X,

Immunogen: Synthesized peptide derived from the C-terminal region of human SLC6A14.

Positive control: Mammary gland, Trachea,

Database links: SwissProt: Q9UN76 Human

Recommended Dilutions:

WB	1:500-1:2000
IHC-P	1:100-300

Storage Buffer: Liquid in PBS containing 50% glycerol, 0.5% BSA and 0.02% sodium azide.

Storage Instruction: Store at +4°C after thawing. Aliquot store at -20°C or -80°C. Avoid repeated freeze / thaw cycles.

Purity: Immunogen affinity purified.

Hangzhou HuaAn Biotechnology Co.,Ltd.

Orders: 0086-571-88062880

Technical: 0086-571-89986345

Service mail: support@huabio.cn

www.huabio.cn



Applications: WB=Western blot IP=Immunoprecipitation IHC=Immunohistochemistry IF=Immunofluorescence FC=Flow cytometry

Images

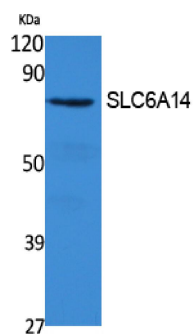


Fig1: Western Blot analysis of extracts from 293 cells, using SLC6A14 Polyclonal Antibody.. Secondary antibody (catalog#: HA1001) was diluted at 1:20000

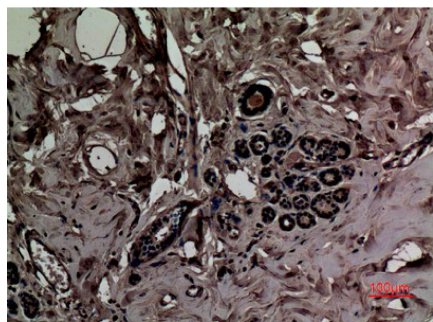


Fig2: Immunohistochemical analysis of paraffin-embedded human-breast, antibody was diluted at 1:100

Note: All products are "FOR RESEARCH USE ONLY AND ARE NOT INTENDED FOR DIAGNOSTIC OR THERAPEUTIC USE".