

# Anti-Rab 26 Antibody

ER65425



<b>Product Type:</b>	Rabbit polyclonal IgG, primary antibodies
<b>Species reactivity:</b>	Human, Mouse, Rat
<b>Applications:</b>	WB, IHC-P
<b>Molecular Wt:</b>	27 kDa

**Description:** Members of the RAB protein family, including RAB26, are important regulators of vesicular fusion and trafficking. The RAB family of small G proteins regulates intercellular vesicle trafficking, including exocytosis, endocytosis, and recycling (summary by Seki et al. 2000)

**Immunogen:** Synthesized peptide derived from Rab 26 . at AA range: 180-260

**Positive control:** Brain,Fetal brain,Hippocampus,

**Database links:** SwissProt: Q9ULW5 Human

**Recommended Dilutions:**

<b>WB</b>	1:500-1:2000
<b>IHC-P</b>	1:100-300

**Storage Buffer:** Liquid in PBS containing 50% glycerol, 0.5% BSA and 0.02% sodium azide.

**Storage Instruction:** Store at +4°C after thawing. Aliquot store at -20°C or -80°C. Avoid repeated freeze / thaw cycles.

**Purity:** Immunogen affinity purified.

Hangzhou HuaAn Biotechnology Co.,Ltd.

Orders: 0086-571-88062880

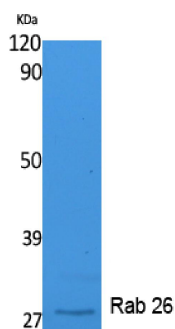
Technical:0086-571-89986345

Service mail: support@huabio.cn

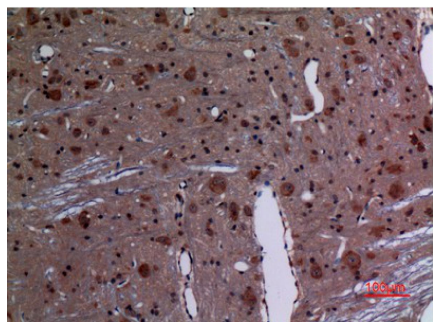
www.huabio.cn



## Images



**Fig1:** Western Blot analysis of extracts from K562 cells, using Rab 26 Polyclonal Antibody.. Secondary antibody (catalog#: HA1001) was diluted at 1:20000



**Fig2:** Immunohistochemical analysis of paraffin-embedded rat-brain, antibody was diluted at 1:100

**Note:** All products are "FOR RESEARCH USE ONLY AND ARE NOT INTENDED FOR DIAGNOSTIC OR THERAPEUTIC USE".