

Anti-ZSCAN22 Antibody

ER65384



Product Type:	Rabbit polyclonal IgG, primary antibodies
Species reactivity:	Human
Applications:	WB, IHC-P
Molecular Wt:	55 kDa

Description: May be involved in transcriptional regulation. PTM:Phosphorylated upon DNA damage, probably by ATM or ATR. Belongs to the krueppel C2H2-type zinc-finger protein family. Contains 1 SCAN box domain. Contains 8 C2H2-type zinc fingers.

Immunogen: The antiserum was produced against synthesized peptide derived from human ZSCAN22. AA range:321-370

Positive control: Fetal kidney,Placenta,Uterus,

Database links: SwissProt: P10073 Human

Recommended Dilutions:

WB	1:500-1:2000
IHC-P	1:100-1:300

Storage Buffer: Liquid in PBS containing 50% glycerol, 0.5% BSA and 0.02% sodium azide.

Storage Instruction: Store at +4°C after thawing. Aliquot store at -20°C or -80°C. Avoid repeated freeze / thaw cycles.

Purity: Immunogen affinity purified.

Hangzhou HuaAn Biotechnology Co.,Ltd.

Orders: 0086-571-88062880

Technical:0086-571-89986345

Service mail: support@huabio.cn

www.huabio.cn



Images

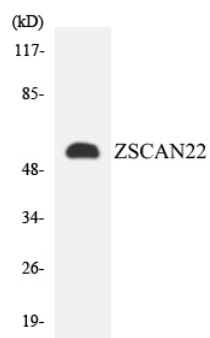


Fig1: Western blot analysis of the lysates from HepG2 cells using ZSCAN22 antibody.

Note: All products are "FOR RESEARCH USE ONLY AND ARE NOT INTENDED FOR DIAGNOSTIC OR THERAPEUTIC USE".



Hangzhou HuaAn Biotechnology Co.,Ltd.

Orders: 0086-571-88062880

Technical:0086-571-89986345

Service mail: support@huabio.cn

www.huabio.cn

Applications: WB=Western blot IP=Immunoprecipitation IHC=Immunohistochemistry IF=Immunofluorescence FC=Flow cytometry