

# Anti-ZNF541 Antibody

ER65363



<b>Product Type:</b>	Rabbit polyclonal IgG, primary antibodies
<b>Species reactivity:</b>	Human
<b>Applications:</b>	WB
<b>Molecular Wt:</b>	83 kDa

**Description:** Component of some chromatin remodeling multiprotein complex that plays a role during spermatogenesis. Contains 1 ELM2 domain. Contains 1 SANT domain. Contains 5 C2H2-type zinc fingers. subunit:Interacts with HDAC1 and HSPA2.

**Immunogen:** The antiserum was produced against synthesized peptide derived from human ZNF541. AA range:931-980

**Positive control:** Epithelium, Testis,

**Database links:** SwissProt: Q9H0D2 Human

**Recommended Dilutions:**  
**WB** 1:500-1:2000

**Storage Buffer:** Liquid in PBS containing 50% glycerol, 0.5% BSA and 0.02% sodium azide.

**Storage Instruction:** Store at +4°C after thawing. Aliquot store at -20°C or -80°C. Avoid repeated freeze / thaw cycles.

**Purity:** Immunogen affinity purified.

Hangzhou HuaAn Biotechnology Co.,Ltd.

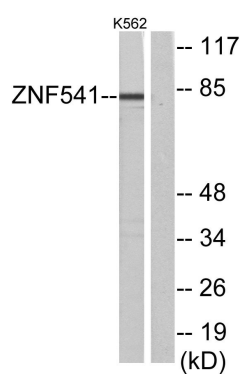
Orders: 0086-571-88062880

Technical:0086-571-89986345

Service mail: support@huabio.cn

www.huabio.cn





**Fig1:** Western blot analysis of lysates from K562 cells, using ZNF541 Antibody. The lane on the right is blocked with the synthesized peptide.

**Note:** All products are "FOR RESEARCH USE ONLY AND ARE NOT INTENDED FOR DIAGNOSTIC OR THERAPEUTIC USE".