

Anti-VN2R1P Antibody

ER65302



Product Type:	Rabbit polyclonal IgG, primary antibodies
Species reactivity:	Human
Applications:	WB, IF-cell
Molecular Wt:	83 kDa

Description: The CARL-1 monoclonal antibody reacts with human TWEAK, a type II transmembrane TNF superfamily member with high identity to TNF in its extracellular portion. TWEAK transcript is expressed broadly in many adult and fetal tissues, however, the staining of human peripheral blood mononuclear cells with monoclonal antibodies shows a more restricted pattern. While freshly isolated PBMCs do not express detectable levels of TWEAK on their surface, IFN-gamma-stimulated blood monocytes rapidly upregulate TWEAK surface expression. TWEAK is expressed as membrane bound and secreted forms. Interaction of TWEAK with its counter-receptor promotes secretion of IL-8, activation of NF-kappaB, proliferation of endothelial cells, and apoptosis in a number of human cell lines. Initially, DR3 was thought to be a receptor for TWEAK, but further studies have shown that TWEAK could induce apoptosis via receptors distinct from DR3. While TWEAK exhibits overlapping signaling functions to TNF, it is generally less effective in inducing apoptosis, giving rise to its name, TNF-like weak inducer of apoptosis. For detection of human TWEAK by sandwich ELISA, a combination of purified CARL-2 for capture and biotinylated CARL-1 for detection is recommended.

Immunogen: The antiserum was produced against synthesized peptide derived from human CASRL1. AA range:400-449

Database links: SwissProt: Q8NGV9 Human

Recommended Dilutions:

WB	1:500-1:2000
IF-cell	1:100-1:500

Storage Buffer: Liquid in PBS containing 50% glycerol, 0.5% BSA and 0.02% sodium azide.

Storage Instruction: Store at +4°C after thawing. Aliquot store at -20°C or -80°C. Avoid repeated freeze / thaw cycles.

Purity: Immunogen affinity purified.

Hangzhou Huaan Biotechnology Co., Ltd.

Orders:0086-571-88062880

Technical:0086-571-89986345

Service mail:support@huabio.cn

 华安生物
HUABIO
www.huabio.cn

Images

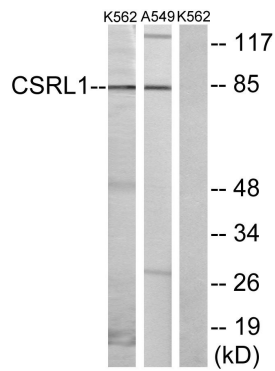


Fig1: Western blot analysis of lysates from K562 cells and A549 cells, using CSRL1 Antibody. The lane on the right is blocked with the synthesized peptide.

Note: All products are "FOR RESEARCH USE ONLY AND ARE NOT INTENDED FOR DIAGNOSTIC OR THERAPEUTIC USE".

Hangzhou Huaan Biotechnology Co., Ltd.

Orders:0086-571-88062880

Technical:0086-571-89986345

Service mail:support@huabio.cn

华安生物
HUABIO
www.huabio.cn