

Anti-V1RL2 Antibody

ER65288



Product Type:	Rabbit polyclonal IgG, primary antibodies
Species reactivity:	Human
Applications:	WB, IF-cell
Molecular Wt:	46 kDa

Description: Putative pheromone receptor. miscellaneous:The chimpanzee, gorilla and orangutan orthologous proteins do not exist, their genes are pseudogenes. online information:No one nose - Issue 61 of August 2005,Belongs to the G-protein coupled receptor 1 family.

Immunogen: The antiserum was produced against synthesized peptide derived from human VN1R2. AA range:88-137

Database links: SwissProt: Q8NFZ6 Human

Recommended Dilutions:

WB	1:500-1:2000
IF-cell	1:100-1:500

Storage Buffer: Liquid in PBS containing 50% glycerol, 0.5% BSA and 0.02% sodium azide.

Storage Instruction: Store at +4°C after thawing. Aliquot store at -20°C or -80°C. Avoid repeated freeze / thaw cycles.

Purity: Immunogen affinity purified.

Hangzhou Huaan Biotechnology Co., Ltd.

Orders:0086-571-88062880

Technical:0086-571-89986345

Service mail:support@huabio.cn

 华安生物
HUABIO
www.huabio.cn

Images

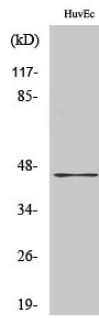


Fig1: Western Blot analysis of HUVEC cells using V1RL2 Polyclonal Antibody. Secondary antibody(catalog#:HA1001) was diluted at 1:20,000.

Note: All products are "FOR RESEARCH USE ONLY AND ARE NOT INTENDED FOR DIAGNOSTIC OR THERAPEUTIC USE".

Hangzhou Huaan Biotechnology Co., Ltd.

Orders:0086-571-88062880

Technical:0086-571-89986345

Service mail:support@huabio.cn

华安生物
HUABIO
www.huabio.cn