

Anti-TLE2 Antibody

ER65176



Product Type:	Rabbit polyclonal IgG, primary antibodies
Species reactivity:	Human
Applications:	WB, IHC-P
Molecular Wt:	110 kDa

Description: Transcriptional corepressor that binds to a number of transcription factors. Inhibits the transcriptional activation mediated by CTNNB1 and TCF family members in Wnt signaling. The effects of full-length TLE family members may be modulated by association with dominant-negative AES. Belongs to the WD repeat Groucho/TLE family. Contains 6 WD repeats. subunit:Homooligomer and heterooligomer with other family members. Binds LEF1, TCF7, TCF7L1, TCF7L2, UTY, HES1 and HES5. tissue specificity:In all tissues examined, mostly in heart, brain, and muscle.

Immunogen: The antiserum was produced against synthesized peptide derived from human TLE2. AA range:211-260

Positive control: Bladder,Fetal brain,Placenta,

Database links: SwissProt: Q04725 Human

Recommended Dilutions:

WB	1:500-1:2000
IHC-P	1:100-1:300

Storage Buffer: Liquid in PBS containing 50% glycerol, 0.5% BSA and 0.02% sodium azide.

Storage Instruction: Store at +4°C after thawing. Aliquot store at -20°C or -80°C. Avoid repeated freeze / thaw cycles.

Purity: Immunogen affinity purified.

Hangzhou HuaAn Biotechnology Co.,Ltd.

Orders: 0086-571-88062880

Technical:0086-571-89986345

Service mail: support@huabio.cn

www.huabio.cn



Images

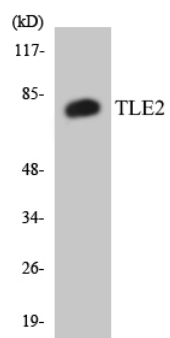


Fig1: Western blot analysis of the lysates from HT-29 cells using TLE2 antibody.

Note: All products are "FOR RESEARCH USE ONLY AND ARE NOT INTENDED FOR DIAGNOSTIC OR THERAPEUTIC USE".