

Anti-TFEB Antibody

ER65144



| | |
|----------------------------|---|
| Product Type: | Rabbit polyclonal IgG, primary antibodies |
| Species reactivity: | Human, Mouse |
| Applications: | WB, IHC-P |
| Molecular Wt: | 52 kDa |

Description: Transcription factor that specifically recognizes and binds E-box sequences (5'-CANNTG-3'). Efficient DNA-binding requires dimerization with itself or with another MiT/TFE family member such as TFE3 or MITF. In association with TFE3, activates the expression of CD40L in T-cells, thereby playing a role in T-cell-dependent antibody responses in activated CD4+ T-cells and thymus-dependent humoral immunity. Specifically recognizes and binds the CLEAR-box sequence (5'-GTCACGTGAC-3') present in the regulatory region of many lysosomal genes, leading to activate their expression. It thereby plays a central role in expression of lysosomal genes. Acts as a positive regulator of autophagy by promoting expression of genes involved in autophagy. Specifically recognizes the gamma-E3 box, a subset of E-boxes, present in the heavy-chain immunoglobulin enhancer. Plays a role in the signal transduction processes required for normal vascularization of the placenta. Regulates lysosomal positioning in response to nutrient deprivation by promoting the expression of PIP4P1.

Immunogen: The antiserum was produced against synthesized peptide derived from human TFEB. AA range:10-59

Positive control: Mouse lung and mouse muscle tissue lysates, human lung carcinoma tissue.

Subcellular location: Nucleus, Cytoplasm.

Database links: SwissProt: P19484 Human

Recommended Dilutions:

| | |
|--------------|--------------|
| WB | 1:500-1:2000 |
| IHC-P | 1:100-1:300 |

Storage Buffer: Liquid in PBS containing 50% glycerol, 0.5% BSA and 0.02% sodium azide.

Storage Instruction: Store at +4°C after thawing. Aliquot store at -20°C or -80°C. Avoid repeated freeze / thaw cycles.

Purity: Immunogen affinity purified.

Hangzhou Huaan Biotechnology Co., Ltd.

Orders:0086-571-88062880

Technical:0086-571-89986345

Service mail:support@huabio.cn

 华安生物
HUABIO
www.huabio.cn

Images

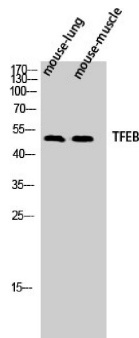


Fig1: Western Blot analysis of mouse lung and mouse muscle tissue lysates using TFEB Polyclonal Antibody diluted at 1:500.

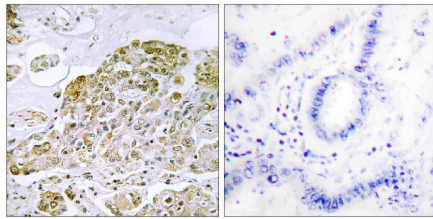


Fig2: Immunohistochemistry analysis of paraffin-embedded human lung carcinoma tissue, using TFEB Antibody. The picture on the right is blocked with the synthesized peptide.

Note: All products are "FOR RESEARCH USE ONLY AND ARE NOT INTENDED FOR DIAGNOSTIC OR THERAPEUTIC USE".

Hangzhou Huaan Biotechnology Co., Ltd.

Orders:0086-571-88062880

Technical:0086-571-89986345

Service mail:support@huabio.cn

华安生物
HUABIO
www.huabio.cn