

# Anti-Syndecan-2 Antibody

## ER65062



<b>Product Type:</b>	Rabbit polyclonal IgG, primary antibodies
<b>Species reactivity:</b>	Human
<b>Applications:</b>	WB
<b>Molecular Wt:</b>	22 kDa

**Description:** The protein encoded by this gene is a transmembrane (type I) heparan sulfate proteoglycan and is a member of the syndecan proteoglycan family. The syndecans mediate cell binding, cell signaling, and cytoskeletal organization and syndecan receptors are required for internalization of the HIV-1 tat protein. The syndecan-2 protein functions as an integral membrane protein and participates in cell proliferation, cell migration and cell-matrix interactions via its receptor for extracellular matrix proteins. Altered syndecan-2 expression has been detected in several different tumor types.

**Immunogen:** The antiserum was produced against synthesized peptide derived from human SDC2. AA range:81-130

**Positive control:** Brain,Embryo,Lung fibroblast,Muscle,Testis,

**Database links:** SwissProt: P34741 Human

**Recommended Dilutions:**

**WB** 1:500-1:2000

**Storage Buffer:** Liquid in PBS containing 50% glycerol, 0.5% BSA and 0.02% sodium azide.

**Storage Instruction:** Store at +4°C after thawing. Aliquot store at -20°C or -80°C. Avoid repeated freeze / thaw cycles.

**Purity:** Immunogen affinity purified.

Hangzhou HuaAn Biotechnology Co.,Ltd.

Orders: 0086-571-88062880

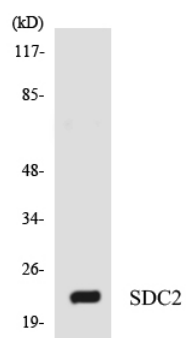
Technical:0086-571-89986345

Service mail: support@huabio.cn

www.huabio.cn



## Images



**Fig1:** Western blot analysis of the lysates from RAW264.7 cells using SDC2 antibody.

**Note:** All products are "FOR RESEARCH USE ONLY AND ARE NOT INTENDED FOR DIAGNOSTIC OR THERAPEUTIC USE".



Hangzhou HuaAn Biotechnology Co.,Ltd.

Orders: 0086-571-88062880

Technical:0086-571-89986345

Service mail: support@huabio.cn

www.huabio.cn

Applications: WB=Western blot IP=Immunoprecipitation IHC=Immunohistochemistry IF=Immunofluorescence FC=Flow cytometry