

# Anti-Synaptotagmin Antibody

## ER65057



<b>Product Type:</b>	Rabbit polyclonal IgG, primary antibodies
<b>Species reactivity:</b>	Human, Mouse, Rat
<b>Applications:</b>	WB, IHC-P
<b>Molecular Wt:</b>	50 kDa

**Description:** The synaptotagmins are integral membrane proteins of synaptic vesicles thought to serve as Ca<sup>2+</sup> sensors in the process of vesicular trafficking and exocytosis. Calcium binding to synaptotagmin-1 participates in triggering neurotransmitter release at the synapse (Fernandez-Chacon et al. 2001)

**Immunogen:** The antiserum was produced against synthesized peptide derived from human Synaptotagmin. AA range:276-325

**Positive control:** Amygdala,Brain,Hippocampus,PNS,

**Database links:** SwissProt: P21579 Human | Q8N9I0 Human

### Recommended Dilutions:

<b>WB</b>	1:500-1:2000
<b>IHC-P</b>	1:100-1:300

**Storage Buffer:** Liquid in PBS containing 50% glycerol, 0.5% BSA and 0.02% sodium azide.

**Storage Instruction:** Store at +4°C after thawing. Aliquot store at -20°C or -80°C. Avoid repeated freeze / thaw cycles.

**Purity:** Immunogen affinity purified.

Hangzhou HuaAn Biotechnology Co.,Ltd.

Orders: 0086-571-88062880

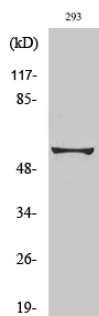
Technical:0086-571-89986345

Service mail: support@huabio.cn

www.huabio.cn



Images



**Fig1:** Western Blot analysis of 293 cell lysate using Synaptotagmin Polyclonal Antibody diluted at 1:2000

---

**Note:** All products are “FOR RESEARCH USE ONLY AND ARE NOT INTENDED FOR DIAGNOSTIC OR THERAPEUTIC USE”.

---