

Anti-Smo Antibody

ER64985



Product Type:	Rabbit polyclonal IgG, primary antibodies
Species reactivity:	Human, Mouse, Rat
Applications:	WB
Molecular Wt:	86 kDa

Description: The protein encoded by this gene is a G protein-coupled receptor that interacts with the patched protein, a receptor for hedgehog proteins. The encoded protein transduces signals to other proteins after activation by a hedgehog protein/patched protein complex.

Immunogen: The antiserum was produced against synthesized peptide derived from human SMO. AA range:68-117

Positive control: Brain,Embryonic lung,Synovial membrane,

Database links: SwissProt: Q99835 Human

Recommended Dilutions:
WB 1:500-1:2000

Storage Buffer: Liquid in PBS containing 50% glycerol, 0.5% BSA and 0.02% sodium azide.

Storage Instruction: Store at +4°C after thawing. Aliquot store at -20°C or -80°C. Avoid repeated freeze / thaw cycles.

Purity: Immunogen affinity purified.

Hangzhou HuaAn Biotechnology Co.,Ltd.

Orders: 0086-571-88062880

Technical:0086-571-89986345

Service mail: support@huabio.cn

www.huabio.cn



Images

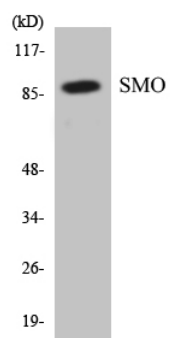


Fig1: Western blot analysis of the lysates from HepG2 cells using SMO antibody.

Note: All products are "FOR RESEARCH USE ONLY AND ARE NOT INTENDED FOR DIAGNOSTIC OR THERAPEUTIC USE".